



MarinTrust Standard V2

By-product Fishery Assessment

DNK27

Cod (*Gadus morhua*)

in ICES Division 5a

MarinTrust Programme

Unit C, Printworks

22 Amelia Street

London

SE17 3BZ

E: standards@marin-trust.com

T: +44 2039 780 819

Table 1 Application details and summary of the assessment outcome

Fishery Under Assessment	Species:	Cod (<i>Gadus morhua</i>)
	Geographical area:	FAO 27 northeast Atlantic Ocean
	Country of origin of the product:	Iceland
	Stock:	Cod in Division 5a (Iceland grounds)
Date	May 2024	
Report Code	DNK27	
Assessor	Sam Peacock	
Country of origin of the product - PASS	Iceland	
Country of origin of the product - FAIL	n/a	

Application details and summary of the assessment outcome			
Company Name(s): Thyborøn, FF Skagen A/S			
Country: Denmark			
Email address:		Applicant Code:	
Certification Body Details			
Name of Certification Body:		Global Trust Certification Ltd. / NSF	
Assessor	Peer Reviewer	Assessment Days	Initial/Surveillance/Re-approval
Sam Peacock	Matthew Jew	0.2	Surveillance 2
Assessment Period		May 2024 – May 2025	

Scope Details	
Main Species	Cod (<i>Gadus morhua</i>)
Stock	Cod in Division 5a (Iceland grounds)
Fishery Location	FAO 27 northeast Atlantic Ocean
Management Authority (Country/ State)	EU and Iceland
Gear Type(s)	Trawl, longline, nets, gillnets, hook and line
Outcome of Assessment	
Peer Review Evaluation	Agree with assessor's recommendation
Recommendation	APPROVED

Table 2. Assessment Determination

Assessment Determination
<p>If any species is categorised as Endangered or Critically Endangered on IUCN’s Red List, or if it appears in the CITES appendices, it cannot be approved for use as Marin trust raw material. Cod (<i>Gadus morhua</i>) does not appear as Endangered or Critically Endangered on IUCN’s Red List, and does not appear in CITES appendices; therefore, <i>Gadus morhua</i> is eligible for approval for use as Marin trust by-product raw material.</p> <p>Cod in ICES Division 5a is managed under a fisheries management plan put in place by the Icelandic Ministry of Food, Agriculture and Fisheries. The stock is managed relative to reference points and was assessed under Category C.</p> <p>Icelandic cod is subject to annual stock assessment by ICES. The most recent stock assessment incorporated catch and survey data and considers discarding to be negligible, and C1.1 is met. Stock biomass was estimated to be substantially higher than the limit reference point level, and C1.2 is met.</p> <p>Therefore, Cod (<i>Gadus morhua</i>) in ICES Division 5a is APPROVED for the production of fishmeal and fish oil under the current MarinTrust v2.3 by-products.</p>
Fishery Assessment Peer Review Comments
<p>The assessor correctly classified Cod (<i>Gadus morhua</i>) in ICES Division 5a as Category C, the stock is subject to a specific management regime.</p> <p>Fishery removals are considered in the stock assessment process. The most recent stock assessment shows that the stock is above B_{MSY}, B_{pa}, and B_{lim}. Therefore, the stock is considered to have biomass above the limit reference point (or proxy). It passes Category C.</p> <p>Cod (<i>Gadus morhua</i>) in ICES Division 5a passes both clauses (C1.1 and C1.2) and therefore should be approved under the MarinTrust Standard v.2.3</p>
Notes for On-site Auditor
<p>N/A</p>

Species Categorisation

NB: If any species is categorised as Endangered or Critically Endangered on the IUCN Red List, or if it appears in CITES Appendix 1, it **cannot** be approved for use as an MarinTrust raw material.

IUCN Red list Category

By-product material from a species listed by IUCN (the International Union for Conservation of Nature) under the Red List for the following categories shall immediately fail the assessment;

- EXTINCT (E) AND EXTINCT IN THE WILD (EW)
- CRITICALLY ENDANGERED (CR) facing an extremely high risk of extinction in the wild.
- ENDANGERED (EN) facing a very high risk of extinction in the wild.

By-product material may be used from the following categories provided that all clauses in the MarinTrust standard are passed.

- VULNERABLE (VU) facing a high risk of extinction in the wild.
- NEAR THREATENED (NT) does not qualify for above now, but is close or is likely to qualify for, a threatened category in the near future.
- LEAST CONCERN (LC) Widespread and abundant.
- DATA DEFICIENT (DD) and NOT EVALUATED (NE)

Table 3 Species Categorisation Table

Common name	Latin name	Stock	Management	Category	IUCN Red List Category ¹	CITES Appendix 1 ²
Cod	<i>Gadus morhua</i>	Cod in Division 5a (Iceland grounds)	Yes	C	Vulnerable ³	No

¹ <https://www.iucnredlist.org/>

² <https://cites.org/eng/app/appendices.php>

³ <https://www.iucnredlist.org/species/8784/12931575>

CATEGORY C SPECIES

In a by-product assessment, Category C species are those which are subject to a species-specific management regime and are usually targeted species in fisheries for human consumption.

Clause C1 should be completed for each Category C species. If there are no Category C species in the fishery under assessment, this section can be deleted. Where a species fails this Clause, it should be assessed as a Category D species instead.

Species Name		Cod (<i>Gadus morhua</i>)	
C1	Category C Stock Status - Minimum Requirements		
	C1.1	Fishery removals of the species in the fishery under assessment are included in the stock assessment process, OR are considered by scientific authorities to be negligible.	PASS
	C1.2	The species is considered, in its most recent stock assessment, to have a biomass above the limit reference point (or proxy), OR removals by the fishery under assessment are considered by scientific authorities to be negligible.	PASS
Clause outcome:			PASS

C1.1 Fishery removals of the species in the fishery under assessment are included in the stock assessment process, OR are considered by scientific authorities to be negligible.

Cod in ICES Division 5a is subjected to annual stock assessment by the ICES Northwestern Working Group (NWWG). The most recent assessment was conducted in 2023, implementing a separable catch-at-age model using catches in the assessment and forecast. The stock assessment incorporated catch-at-age data and two survey indices. Discarding is considered negligible.

The 2023 catch advice states that “ICES advises that when the Icelandic management plan is applied, catches in the fishing year 2023/2024 should be no more than 211,309 tonnes.” (ICES 2023).

Catches are presented in the figure below:

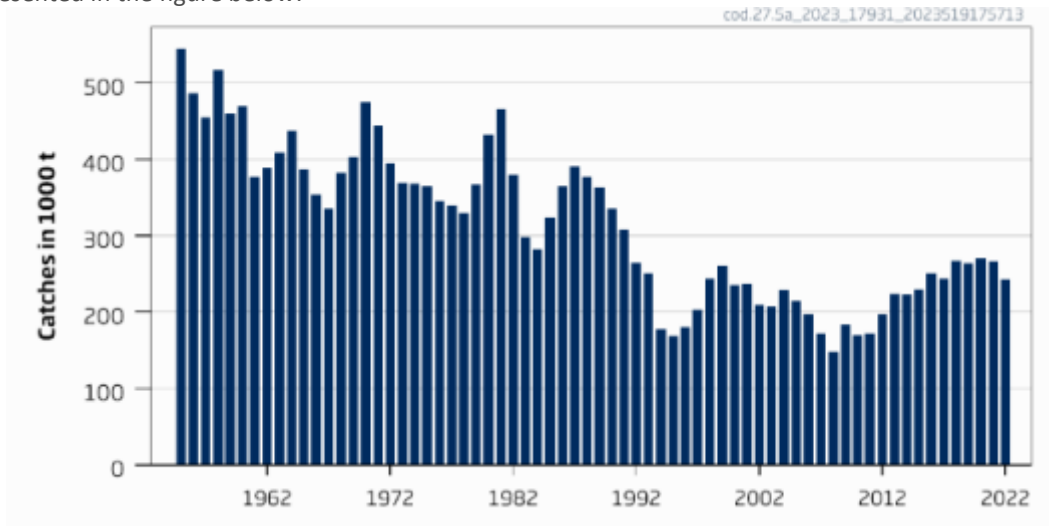


Figure 1. Cod in ICES Division 5a, catches (ICES 2023)

Therefore, fishery removals of the species in the fishery under assessment are included in the stock assessment process and therefore the stock PASSES clause C1.1.

C1.2 The species is considered, in its most recent stock assessment, to have a biomass above the limit reference point (or proxy), OR removals by the fishery under assessment are considered by scientific authorities to be negligible.

The regular ICES catch advice provides an indication of the status of the stock relative to established reference points. The target reference point $MSY B_{trigger}$ has been set at 265,000t; the management plan target reference point $MGT B_{trigger}$ has been set at

220,000t. The limit reference point B_{lim} has been set at 125,000t. The 2023 catch advice provides a projection of estimated SSB in 2024 at 397,861t (ICES 2023)

The 2023 ICES catch advice states that “Fishing pressure on the stock is at H_{MSY} and below H_{Rpa} . Spawning-stock size is above $MSY B_{trigger}$, B_{pa} , and B_{lim} .” (ICES 2023). See figure 2, below.

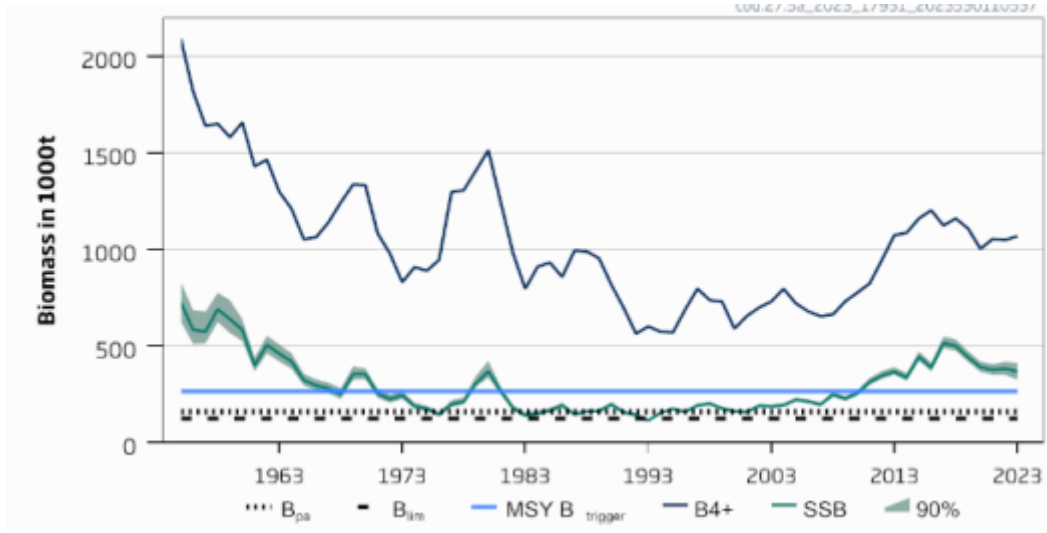


Figure 2. Cod in ICES Division 5a, SSB over time (ICES 2023).

Therefore, the species is considered, in its most recent stock assessment, to have a biomass above the limit reference point (or proxy) and it PASSES clause C1.2.

References

ICES (2023). Cod (*Gadus morhua*) in Division 5.a (Iceland grounds). ICES Advice: Recurrent Advice. Report. <https://doi.org/10.17895/ices.advice.21828315.v1>

Links

MarinTrust Standard clause	1.3.2.2
FAO CCRF	7.5.3
GSSI	D.3.04, D5.01