



## MarinTrust Standard V2

### By-product Fishery Assessment

### DNK39

### Herring (*Clupea harengus*)

### in ICES Subareas 1, 2 and 5, and Divisions 4a and 14a

**MarinTrust Programme**

Unit C, Printworks

22 Amelia Street

London

SE17 3BZ

E: [standards@marin-trust.com](mailto:standards@marin-trust.com)

T: +44 2039 780 819

**Table 1 Application details and summary of the assessment outcome**

Fishery Under Assessment	Species:	Herring ( <i>Clupea harengus</i> )
	Geographical area:	FAO 27
	Country of origin of the product:	Denmark
	Stock:	ICES Subareas 1, 2 and 5, and Divisions 4a and 14a
Date	December 2024	
Report Code	DNK39	
Assessor	Sam Peacock	
Country of origin of the product - PASS	Denmark	
Country of origin of the product - FAIL	None	

Application details and summary of the assessment outcome			
Company Name(s): Thyborøn, FF Skagen A/S			
Country: Denmark			
Email address:		Applicant Code:	
Certification Body Details			
Name of Certification Body:		NSF / Global Trust Certification Ltd	
Assessor	Peer Reviewer	Assessment Days	Initial/Surveillance/Re-approval
Sam Peacock	Matthew Jew	0.2	Surveillance 1
Assessment Period	December 2024 – December 2025		

Scope Details	
Main Species	Herring ( <i>Clupea harengus</i> )
Stock	ICES Subareas 1, 2 and 5, and Divisions 4a and 14a
Fishery Location	FAO 27
Management Authority (Country/ State)	EU, Norway, UK, Russian Federation, Iceland, Faroe Islands
Gear Type(s)	Pelagic trawls and purse seines
Outcome of Assessment	
Peer Review Evaluation	Agree with assessor's recommendation
Recommendation	<b>APPROVED</b>

**Table 2. Assessment Determination**

Assessment Determination
<p>If any species is categorised as Endangered or Critically Endangered on IUCN’s Red List, or if it appears in the CITES appendices, it cannot be approved for use as Marin trust raw material. Herring (<i>Clupea harengus</i>) does not appear as Endangered or Critically Endangered on IUCN’s Red List, and does not appear in CITES appendices; therefore, <i>Clupea harengus</i> is eligible for approval for use as Marin trust by-product raw material.</p> <p>A long-term management strategy is in place and has been agreed by all participating coastal states. ICES has evaluated the strategy and found it to be precautionary, although recent failures to agree in international quota shares have meant that total catches have exceeded this level.</p> <p>As the stock is managed relative to reference points using an annual quota, it was assessed under Category C. A regular stock assessment incorporates all catch data, meeting the requirements of C1.1. Stock SSB is currently estimated to be between the target and limit reference point levels, meeting the requirements of C1.2.</p> <p>Therefore, herring (<i>Clupea harengus</i>) in ICES Subareas 1, 2 and 5, and Divisions 4a and 14a is <b>APPROVED</b> for the production of fishmeal and fish oil under the current MarinTrust v2.3 by-products.</p>
Fishery Assessment Peer Review Comments
<p>The assessor correctly classified herring (<i>Clupea harengus</i>) in ICES Subareas 1, 2, and 5, and in divisions 4.a and 14.a as Category C, the stock is subject to a specific management regime and reference points are defined.</p> <p>Fishery removals are considered in the stock assessment process. The most recent stock assessment shows that the stock is below MSY <math>B_{trigger}</math> and <math>B_{pa}</math>, however the stock remains above <math>B_{lim}</math>. Therefore, because the stock has biomass above <math>B_{lim}</math>, it is considered to have biomass above the limit reference point.</p> <p>Herring (<i>Clupea harengus</i>) in ICES Subareas 1, 2, and 5, and in divisions 4.a and 14.a passes both clauses (C1.1 and C1.2) and therefore should be approved under the MarinTrust Standard v.2.3.</p>
Notes for On-site Auditor
<p>N/A</p>

## Species Categorisation

**NB:** If any species is categorised as Endangered or Critically Endangered on the IUCN Red List, or if it appears in CITES Appendix 1, it **cannot** be approved for use as an MarinTrust raw material.

### IUCN Red list Category

By-product material from a species listed by IUCN (the International Union for Conservation of Nature) under the Red List for the following categories shall immediately fail the assessment;

- EXTINCT (E) AND EXTINCT IN THE WILD (EW)
- CRITICALLY ENDANGERED (CR) facing an extremely high risk of extinction in the wild.
- ENDANGERED (EN) facing a very high risk of extinction in the wild.

By-product material may be used from the following categories provided that all clauses in the MarinTrust standard are passed.

- VULNERABLE (VU) facing a high risk of extinction in the wild.
- NEAR THREATENED (NT) does not qualify for above now, but is close or is likely to qualify for, a threatened category in the near future.
- LEAST CONCERN (LC) Widespread and abundant.
- DATA DEFICIENT (DD) and NOT EVALUATED (NE)

## Table 3 Species Categorisation Table

Common name	Latin name	Stock	Management	Category	IUCN Red List Category <sup>1</sup>	CITES Appendix 1 <sup>2</sup>
Herring	<i>Clupea harengus</i>	ICES Subareas 1, 2 and 5, and Divisions 4a and 14a	Yes	C	Least Concern <sup>3</sup>	No

<sup>1</sup> <https://www.iucnredlist.org/>

<sup>2</sup> <https://cites.org/eng/app/appendices.php>

<sup>3</sup> <https://www.iucnredlist.org/species/155123/4717767>

## CATEGORY C SPECIES

In a by-product assessment, Category C species are those which are subject to a species-specific management regime and are usually targeted species in fisheries for human consumption.

Clause C1 should be completed for each Category C species. If there are no Category C species in the fishery under assessment, this section can be deleted. Where a species fails this Clause, it should be assessed as a Category D species instead.

Species Name		Herring ( <i>Clupea harengus</i> )	
C1	Category C Stock Status - Minimum Requirements		
	C1.1	Fishery removals of the species in the fishery under assessment are included in the stock assessment process, OR are considered by scientific authorities to be negligible.	PASS
	C1.2	The species is considered, in its most recent stock assessment, to have a biomass above the limit reference point (or proxy), OR removals by the fishery under assessment are considered by scientific authorities to be negligible.	PASS
			Clause outcome: PASS

**C1.1 Fishery removals of the species in the fishery under assessment are included in the stock assessment process, OR are considered by scientific authorities to be negligible.**

Herring in Subareas 1, 2 and 5, and Divisions 4a and 14a is subject to regular stock assessment by the ICES Working Group on Widely Distributed Stocks (WGWIDE). The most recent stock assessment was conducted in 2024 using an age-based analytical assessment which incorporated commercial catches-at-age, three survey indices, maturity ogive by year-class strength, and a fixed natural mortality estimate from historical analysis. Discards and bycatch are considered negligible.

The 2024 catch advice states that “ICES advises that when the long-term management strategy agreed by the UK, the Faroe Islands, Iceland, Norway, the Russian Federation, and the European Union is applied, catches in 2025 should be no more than 401 794 tonnes.” (ICES 2024).

Total catches are presented in the figure below:

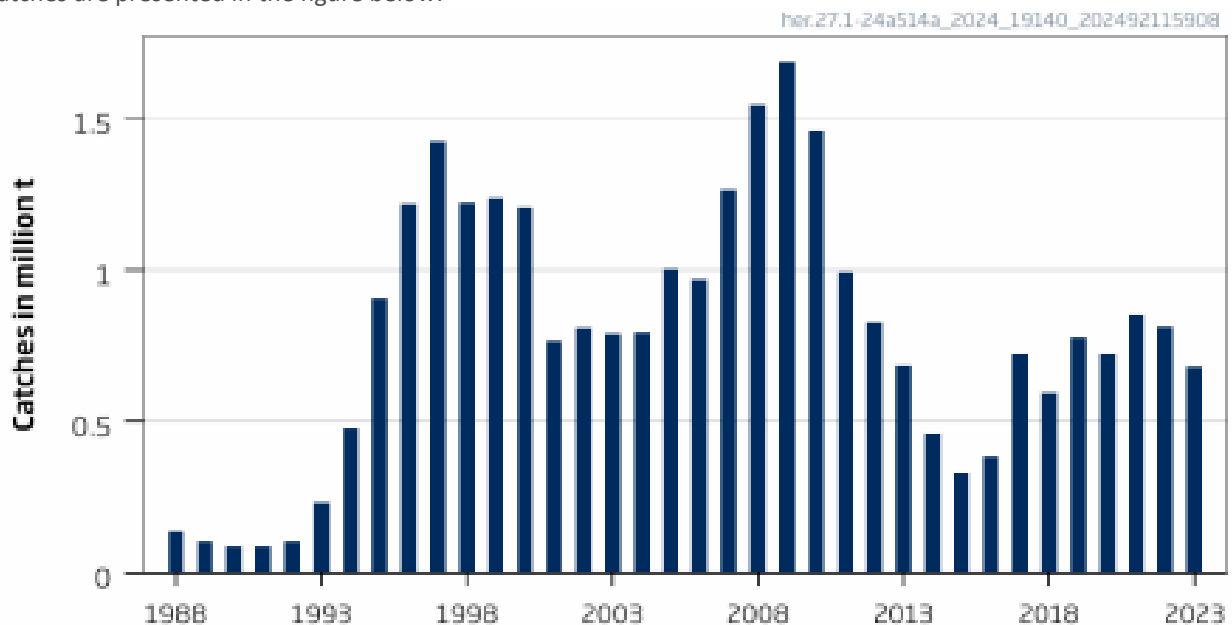


Figure 1. Herring in Subareas 1, 2 and 5, and Divisions 4a and 14a: total catch (ICES 2024)

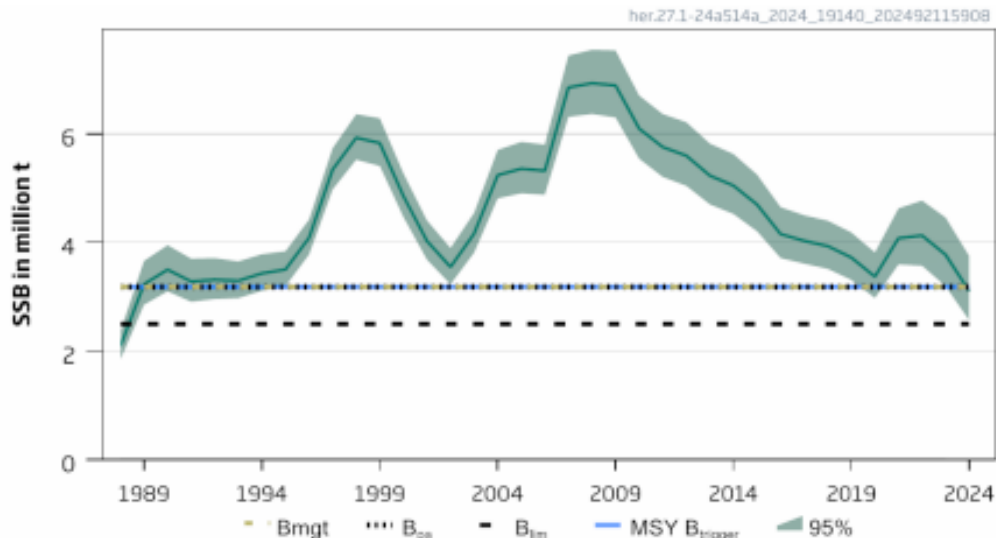
Therefore, fishery removals of the species in the fishery under assessment are included in the stock assessment process and therefore the stock PASSES clause C1.1.

**C1.2 The species is considered, in its most recent stock assessment, to have a biomass above the limit reference point (or proxy), OR removals by the fishery under assessment are considered by scientific authorities to be negligible.**

The catch advice provides an indication of the current status of the stock relative to established reference points. The target reference points MSY  $B_{trigger}$ ,  $B_{pa}$ , and  $SSB_{mgt}$  have been set at 3.184 million tonnes. The limit reference points  $B_{lim}$  and  $SSB_{mgt\_lower}$  have been set at 2.5 million tonnes. The advice includes a short-term projection for SSB in 2025 of 2,933,000t, between the target and limit reference points.

The catch advice also states, “Fishing pressure on the stock is above FMSY and between  $F_{pa}$  and  $F_{lim}$ ; spawning-stock size is below MSY  $B_{trigger}$ , and  $B_{pa}$ , and above  $B_{lim}$ ” (ICES 2024).

Estimated SSB relative to reference points is shown in Figure 2 below.



**Figure 2.** Herring in Subareas 1, 2 and 5, and Divisions 4a and 14a: estimated SSB relative to current reference points (ICES 2024)

**Therefore, the species is considered, in its most recent stock assessment, to have a biomass above the limit reference point (or proxy) and it PASSES clause C1.2.**

**References**

ICES (2024). Herring (*Clupea harengus*) in subareas 1, 2, 5 and divisions 4.a and 14.a, Norwegian spring-spawning herring (the Northeast Atlantic and Arctic Ocean). ICES Advice: Recurrent Advice. Report. <https://doi.org/10.17895/ices.advice.25019270.v1>

**Links**

<b>MarinTrust Standard clause</b>	1.3.2.2
<b>FAO CCRF</b>	7.5.3
<b>GSSI</b>	D.3.04, D5.01