



MarinTrust Standard V2

By-product Fishery Assessment

ESP34

European anchovy

(Engraulis encrasicolus)

in FAO 27, ICES Subdivision 8

(Bay of Biscay)

MarinTrust Programme

Unit C, Printworks

22 Amelia Street

London

SE17 3BZ

E: standards@marin-trust.com

T: +44 2039 780 819

Table 1 Application details and summary of the assessment outcome

Fishery Under Assessment	Species:	European anchovy (<i>Engraulis encrasicolus</i>)
	Geographical area:	FAO 27, Northeast Atlantic Ocean
	Country of origin of the product:	Spain (flag state not provided by client)
	Stock:	Anchovy in FAO 27, ICES subarea 8 (Bay of Biscay)
Date	July 2024	
Report Code	ESP34	
Assessor	Ana Elisa Almeida Ayres	
Country of origin of the product - PASS	Spain (flag state not provided by client)	
Country of origin of the product - FAIL	N/A	

Application details and summary of the assessment outcome			
Company Name(s): Hijos de Emilio Ramirez SA - Pescave			
Country: Spain (flag state(s) not provided by client)			
Email address:		Applicant Code:	
Certification Body Details			
Name of Certification Body:		NSF / Global Trust Certification Ltd.	
Assessor	Peer Reviewer	Assessment Days	Initial/Surveillance/Re-approval
Ana Elisa Almeida Ayres	Matthew Jew	0.5	Surveillance 1
Assessment Period		July 2024 – July 2025	

Scope Details	
Main Species	European anchovy (<i>Engraulis encrasicolus</i>)
Stock	Anchovy in FAO 27, ICES subarea 8 (Bay of Biscay)
Fishery Location	FAO 27, Northeast Atlantic Ocean
Management Authority (Country/ State)	European Union (Common Fishery Policy)
Gear Type(s)	Purse-seiner (99.89 %) and pelagic trawler (0.11 %)
Outcome of Assessment	
Peer Review Evaluation	Agree with assessor's recommendation
Recommendation	APPROVED

Table 2. Assessment Determination

Assessment Determination
<p>If any species is categorised as Endangered or Critically Endangered on Union for Conservation of Nature's Red List of Threatened Species - IUCN's Red List, or if it appears in the Convention on International Trade in Endangered Species of Wild Fauna and Flora - CITES appendices, it cannot be approved for use as MarinTrust raw material. European anchovy (<i>Engraulis encrasicolus</i>) is not categorised as Endangered or Critically Endangered on IUCN's Red List and does not appear in CITES appendices; therefore, European anchovy (<i>Engraulis encrasicolus</i>) is eligible for approval for use as MarinTrust by-product raw material.</p> <p>A set of harvest control rules for a management calendar year exists and was evaluated by Scientific, Technical and Economic Committee for Fisheries (STEF). The European Commission requested that ICES review the harvest control rules and it was concluded that it is precautionary. As there is a management regime in place and reference points are defined, this stock is assessed under category C. Fishery removals are included in the stock assessment and it PASSES Clause C1.1. The stock is considered, in its most recent stock assessment, to have biomass above the limit reference point, it PASSES Clause C1.2.</p> <p>Therefore, European anchovy (<i>Engraulis encrasicolus</i>) in FAO 27, ICES Subdivision 8 is APPROVED for the production of fishmeal and fish oil under the current MarinTrust v2.3 by-products standard.</p>
Fishery Assessment Peer Review Comments
<p>The assessor correctly classified European anchovy (<i>Engraulis encrasicolus</i>) in ICES Subareas 8 as Category C, the stock is subject to a specific management regime.</p> <p>Fishery removals are considered in the stock assessment process. The most recent stock assessment shows that the stock is above B_{lim}. Therefore, the stock is considered to have biomass above the limit reference point (or proxy). It passes Category C.</p> <p>European anchovy (<i>Engraulis encrasicolus</i>) in ICES Subareas 8 passes both clauses (C1.1 and C1.2) and therefore should be approved under the MarinTrust Standard v.2.3</p>
Notes for On-site Auditor
<p>N/A</p>

Species Categorisation

NB: If any species is categorised as Endangered or Critically Endangered on the IUCN Red List, or if it appears in CITES Appendix 1, it **cannot** be approved for use as an MarinTrust raw material.

IUCN Red list Category

By-product material from a species listed by IUCN (the International Union for Conservation of Nature) under the Red List for the following categories shall immediately fail the assessment;

- EXTINCT (E) AND EXTINCT IN THE WILD (EW)
- CRITICALLY ENDANGERED (CR) facing an extremely high risk of extinction in the wild.
- ENDANGERED (EN) facing a very high risk of extinction in the wild.

By-product material may be used from the following categories provided that all clauses in the MarinTrust standard are passed.

- VULNERABLE (VU) facing a high risk of extinction in the wild.
- NEAR THREATENED (NT) does not qualify for above now, but is close or is likely to qualify for, a threatened category in the near future.
- LEAST CONCERN (LC) Widespread and abundant.
- DATA DEFICIENT (DD) and NOT EVALUATED (NE)

Table 3 Species Categorisation Table

Common name	Latin name	Stock	Management	Category	IUCN Red List Category ¹	CITES Appendix 1 ²
European anchovy	<i>Engraulis encrasicolus</i>	Anchovy (<i>Engraulis encrasicolus</i>) in FAO 27, Subarea 8 (Bay of Biscay)	Yes	C	LC ³	No

¹ <https://www.iucnredlist.org/>

² <https://cites.org/eng/app/appendices.php>

³ <https://www.iucnredlist.org/species/198568/45083771>

CATEGORY C SPECIES

In a by-product assessment, Category C species are those which are subject to a species-specific management regime and are usually targeted species in fisheries for human consumption.

Clause C1 should be completed for each Category C species. If there are no Category C species in the fishery under assessment, this section can be deleted. Where a species fails this Clause, it should be assessed as a Category D species instead.

Species Name		European anchovy (<i>Engraulis encrasicolus</i>)	
C1	Category C Stock Status - Minimum Requirements		
	C1.1	Fishery removals of the species in the fishery under assessment are included in the stock assessment process, OR are considered by scientific authorities to be negligible.	Pass
	C1.2	The species is considered, in its most recent stock assessment, to have a biomass above the limit reference point (or proxy), OR removals by the fishery under assessment are considered by scientific authorities to be negligible.	Pass

Clause outcome: Pass

C1.1 Fishery removals of the species in the fishery under assessment are included in the stock assessment process, OR are considered by scientific authorities to be negligible.

ICES advises that when the EU management plan is applied, catches in 2024 should be no more than 33 000 tonnes (ICES, 2023).

This stock is assessed using a two-stage Bayesian biomass dynamic model (CBBM) assessment that uses catches in the model and in the forecast. The data used in this model area: commercial catches (international landings, ages and length frequencies from catch sampling), three surveys (BIOMAN [I9143] 1987–2023, PELGAS [A4150] 1989–2023, JUVENA [A6767] 2003–2023); annual maturity data from DEPM survey (BIOMAN [I9143], 1987-2023) and constant natural mortalities estimated from spring surveys. Discarding and bycatch are considered negligible.

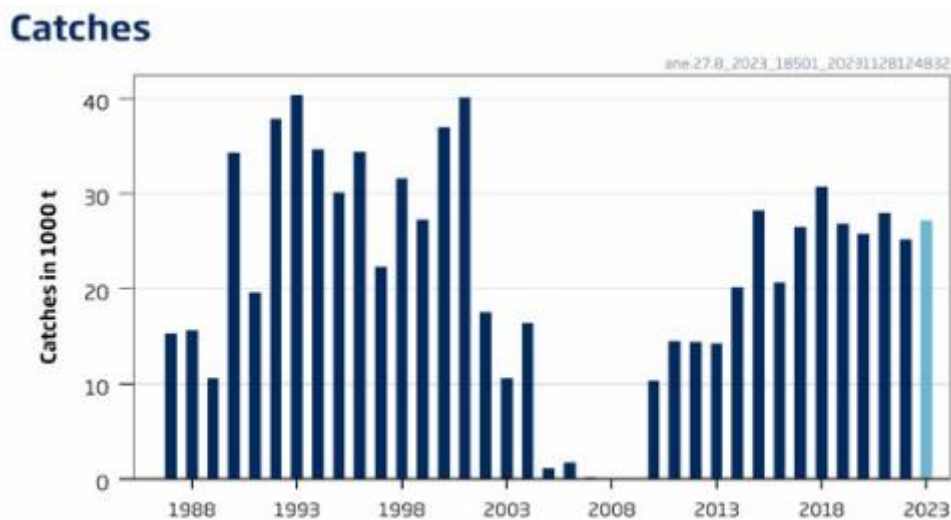


Figure 1. Trends in catch (the 2023 lighter blue bar is a preliminary estimation) of European anchovy in Subarea 8 (ICES, 2023).

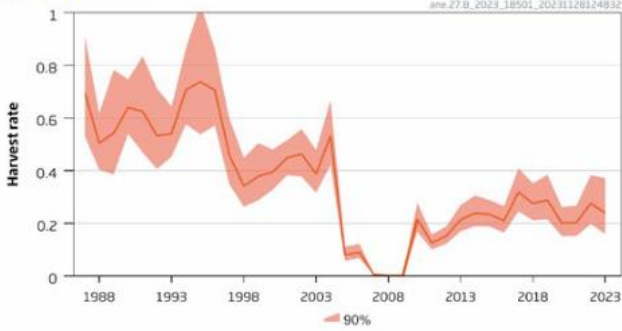
Therefore, fishery removals of the species in the fishery under assessment are included in the stock assessment process and therefore, the stock PASSES clause C1.1

C1.2 The species is considered, in its most recent stock assessment, to have a biomass above the limit reference point (or proxy), OR removals by the fishery under assessment are considered by scientific authorities to be negligible.

This stock does not have two sets of reference points, but it does have a biomass limit reference point (Blim) which is equal to 21 000 tonnes.

Spawning-stock size is above Blim; no reference points for Bpa, MSY Btrigger, or fishing pressure have been defined for this Stock (ICES, 2023).

Harvest rate



SSB

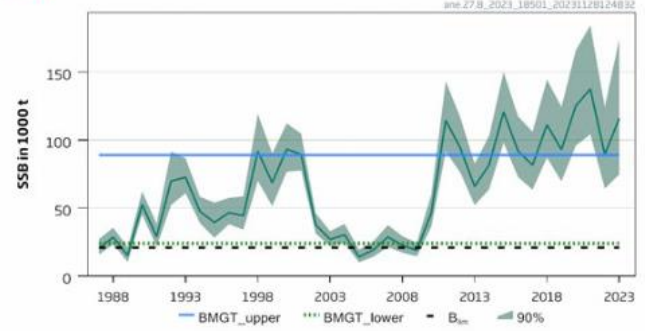


Figure 2. Harvest rate (catch/SSB), and spawning-stock biomass (estimated in mid-May) of European anchovy in Subarea 8 (ICES, 2023).

Therefore, the species is considered, in its most recent stock assessment, to have a biomass above the limit reference point

References

ICES. 2023. Anchovy (*Engraulis encrasicolus*) in Subarea 8 (Bay of Biscay). In Report of the ICES Advisory Committee, 2023. ICES Advice 2023, ane.27.8, <https://doi.org/10.17895/ices.advice.21907872>

Links

MarinTrust Standard clause	1.3.2.2
FAO CCRF	7.5.3
GSSI	D.3.04, D5.01