



## MarinTrust Standard V2

### By-product Fishery Assessment

### FRA13

### Anglerfish (*Lophius piscatorius*)

### in ICES Divisions 7b-k and 8a,b,d

**MarinTrust Programme**

Unit C, Printworks

22 Amelia Street

London

SE17 3BZ

E: [standards@marin-trust.com](mailto:standards@marin-trust.com)

T: +44 2039 780 819

**Table 1 Application details and summary of the assessment outcome**

Fishery Under Assessment	Species:	Anglerfish ( <i>Lophius piscatorius</i> )
	Geographical area:	FAO 27
	Country of origin of the product:	France
	Stock:	ICES Subarea 7 and Divisions 8a,b,d
Date	July 2024	
Report Code	FRA13	
Assessor	Sam Peacock	
Country of origin of the product - PASS	France	
Country of origin of the product - FAIL	None	

Application details and summary of the assessment outcome			
Company Name(s): Concarneau			
Country: France			
Email address:		Applicant Code:	
Certification Body Details			
Name of Certification Body:		Global Trust Certification Ltd. / NSF	
Assessor	Peer Reviewer	Assessment Days	Initial/Surveillance/Re-approval
Sam Peacock	Matthew Jew	0.2	Surveillance 2
Assessment Period		July 2024 – July 2025	

Scope Details	
Main Species	Anglerfish ( <i>Lophius piscatorius</i> )
Stock	ICES Subarea 7 and Divisions 8a,b,d
Fishery Location	FAO 27
Management Authority (Country/ State)	EU
Gear Type(s)	All gears
Outcome of Assessment	
Peer Review Evaluation	Agree with assessor's recommendation
Recommendation	<b>APPROVED</b>

**Table 2. Assessment Determination**

Assessment Determination
<p>If any species is categorised as Endangered or Critically Endangered on IUCN’s Red List, or if it appears in the CITES appendices, it cannot be approved for use as Marin trust raw material. Anglerfish (<i>Lophius piscatorius</i>) has been categorised by the IUCN as Least Concern, and it does not appear in the CITES appendices. Therefore, <i>Lophius piscatorius</i> is eligible for approval for use as Marin trust by-product raw material.</p> <p>Anglerfish in ICES Divisions 7b-k and 8a,b,d is managed relative to target and limit reference points and is subject to annual quotas, and was therefore assessed under Category C. The stock is managed under an EU Multi-annual Management Plan (MAP) which was adopted in 2019, although there is no shared management plan with the UK for the stock.</p> <p>The stock was most recently assessed in 2023. The stock assessment outputs are considered reliable, and therefore C1.1 is met. The stock assessment concluded that stock biomass is substantially above both the limit and target reference point levels. For this reason, C1.2 is met.</p> <p>Therefore, anglerfish (<i>Lophius piscatorius</i>) in ICES Divisions 7b-k and 8a,b,d is <b>APPROVED</b> for the production of fishmeal and fish oil under the current MarinTrust v2.3 by-products.</p>
Fishery Assessment Peer Review Comments
<p>The assessor correctly classified anglerfish (<i>Lophius piscatorius</i>) in ICES Divisions 7b-k and 8a,b,d as Category C, the stock is subject to a specific management regime.</p> <p>Fishery removals are considered in the stock assessment process. The most recent stock assessment shows that the stock is above <math>MSY_{B_{trigger}}</math>, <math>B_{PA}</math>, and <math>B_{lim}</math>. Therefore, the stock is considered to have biomass above the limit reference point (or proxy). It passes Category C.</p> <p>Anglerfish (<i>Lophius piscatorius</i>) in ICES Divisions 7b-k and 8a,b,d passes both clauses (C1.1 and C1.2) and therefore should be approved under the MarinTrust Standard v.2.3</p>
Notes for On-site Auditor
<p>At re-approval in 2022, this stock was approved as a species complete for <i>Lophius piscatorius</i> and <i>L. budegassa</i>. Please confirm that the species being sourced is the same as the species covered by this report.</p>

## Species Categorisation

**NB:** If any species is categorised as Endangered or Critically Endangered on the IUCN Red List, or if it appears in CITES Appendix 1, it **cannot** be approved for use as an MarinTrust raw material.

### IUCN Red list Category

By-product material from a species listed by IUCN (the International Union for Conservation of Nature) under the Red List for the following categories shall immediately fail the assessment;

- EXTINCT (E) AND EXTINCT IN THE WILD (EW)
- CRITICALLY ENDANGERED (CR) facing an extremely high risk of extinction in the wild.
- ENDANGERED (EN) facing a very high risk of extinction in the wild.

By-product material may be used from the following categories provided that all clauses in the MarinTrust standard are passed.

- VULNERABLE (VU) facing a high risk of extinction in the wild.
- NEAR THREATENED (NT) does not qualify for above now, but is close or is likely to qualify for, a threatened category in the near future.
- LEAST CONCERN (LC) Widespread and abundant.
- DATA DEFICIENT (DD) and NOT EVALUATED (NE)

## Table 3 Species Categorisation Table

Common name	Latin name	Stock	Management	Category	IUCN Red List Category <sup>1</sup>	CITES Appendix 1 <sup>2</sup>
Anglerfish	<i>Lophius piscatorius</i>	ICES Subarea 7 and Divisions 8a,b,d	Yes	C	Least Concern <sup>3</sup>	No

<sup>1</sup> <https://www.iucnredlist.org/>

<sup>2</sup> <https://cites.org/eng/app/appendices.php>

<sup>3</sup> <https://www.iucnredlist.org/species/198610/21911225>

## CATEGORY C SPECIES

In a by-product assessment, Category C species are those which are subject to a species-specific management regime and are usually targeted species in fisheries for human consumption.

Clause C1 should be completed for each Category C species. If there are no Category C species in the fishery under assessment, this section can be deleted. Where a species fails this Clause, it should be assessed as a Category D species instead.

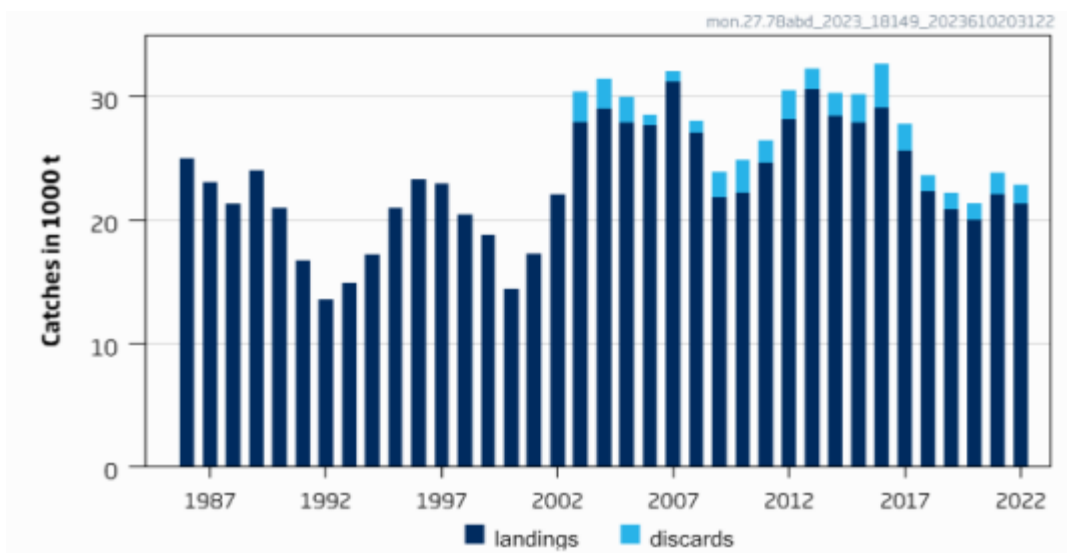
Species Name		Anglerfish ( <i>Lophius piscatorius</i> )	
C1	Category C Stock Status - Minimum Requirements		
	C1.1	Fishery removals of the species in the fishery under assessment are included in the stock assessment process, OR are considered by scientific authorities to be negligible.	PASS
	C1.2	The species is considered, in its most recent stock assessment, to have a biomass above the limit reference point (or proxy), OR removals by the fishery under assessment are considered by scientific authorities to be negligible.	PASS
Clause outcome:			PASS

**C1.1 Fishery removals of the species in the fishery under assessment are included in the stock assessment process, OR are considered by scientific authorities to be negligible.**

Anglerfish in ICES Subarea 7 and Divisions 8a,b,d is subjected to regular stock assessment by the ICES Working Group for the Bay of Biscay and the Iberian Waters Ecoregion (WGBIE). The most recent assessment was conducted in 2023, and applied a length-based age-structured Stock Synthesis model that utilised catches in the model and forecast. The assessment also incorporated three survey indices and all discards.

The 2023 ICES catch advice states, “ICES advises that when the MSY approach is applied, catches in 2024 should be no more than 35 502 tonnes” (ICES 2023).

Catches are presented in the figure below:



**Figure 1.** Anglerfish in ICES Subarea 7 and Divisions 8a,b,d. Catches (ICES 2023)

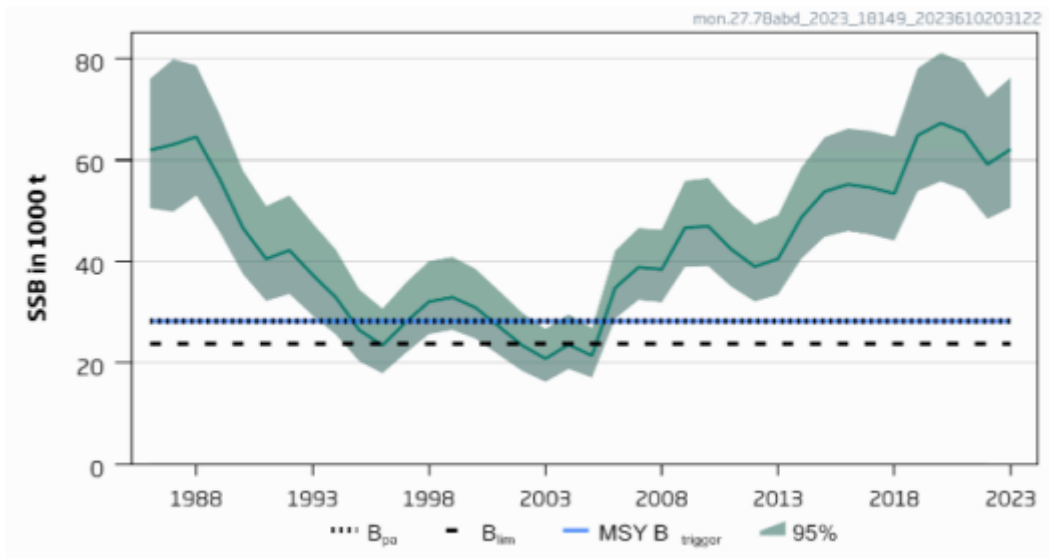
Therefore, fishery removals of the species in the fishery under assessment are included in the stock assessment process and therefore the stock PASSES clause C1.1.

**C1.2 The species is considered, in its most recent stock assessment, to have a biomass above the limit reference point (or proxy), OR removals by the fishery under assessment are considered by scientific authorities to be negligible.**

The regular ICES catch advice includes an indication of the status of the stock relative to established reference points. The target reference points  $MSY B_{trigger}$ ,  $B_{pa}$  and  $MAP MSY B_{trigger}$  have been set at 28,275t. The limit reference points  $B_{lim}$  and  $MAP B_{lim}$  have been set at 23,868t. The catch advice included a short-term forecast for SSB in 2024 of 64,207t, substantially larger than the target reference point level.

The ICES catch advice states, “Fishing pressure on the stock is below  $F_{MSY}$ ; spawning-stock size is above  $MSY B_{trigger}$ ,  $B_{pa}$ , and  $B_{lim}$ ” (ICES 2023).

See diagram below for estimated SSB over time.



**Figure 2.** Anglerfish in ICES Subarea 7 and Divisions 8a,b,d. Estimated SSB relative to current reference points (ICES 2023)

Therefore, the species is considered, in its most recent stock assessment, to have a biomass above the limit reference point (or proxy) and it PASSES clause C1.2.

**References**

ICES (2023). White anglerfish (*Lophius piscatorius*) in Subarea 7 and divisions 8.a–b and 8.d (Celtic Seas, Bay of Biscay). ICES Advice: Recurrent Advice. Report. <https://doi.org/10.17895/ices.advice.21840948.v1>

**Links**

MarinTrust Standard clause	1.3.2.2
FAO CCRF	7.5.3
GSSI	D.3.04, D5.01