



MarinTrust Standard V2

By-product Fishery Assessment

FRA23

Saithe (*Pollachius virens*)

in ICES Division 5a

MarinTrust Programme

Unit C, Printworks

22 Amelia Street

London

SE17 3BZ

E: standards@marin-trust.com

T: +44 2039 780 819

Table 1 Application details and summary of the assessment outcome

Fishery Under Assessment	Species:	Saithe (<i>Pollachius virens</i>)
	Geographical area:	FAO 27
	Country of origin of the product:	France
	Stock:	ICES Division 5a
Date	August 2024	
Report Code	FRA23	
Assessor	Sam Peacock	
Country of origin of the product - PASS	France	
Country of origin of the product - FAIL	None	

Application details and summary of the assessment outcome			
Company Name(s): Copalis Industrie			
Country: France			
Email address:		Applicant Code:	
Certification Body Details			
Name of Certification Body:		NSF / Global Trust Certification Ltd.	
Assessor	Peer Reviewer	Assessment Days	Initial/Surveillance/Re-approval
Sam Peacock	Léa Lebechnech	0.2	Surveillance 2
Assessment Period	August 2024 – August 2025		

Scope Details	
Main Species	Saithe (<i>Pollachius virens</i>)
Stock	ICES Division 5a
Fishery Location	FAO 27
Management Authority (Country/ State)	Iceland
Gear Type(s)	Bottom trawl, gillnet, others
Outcome of Assessment	
Peer Review Evaluation	Agree with the assessor's determination
Recommendation	APPROVED

Table 2. Assessment Determination

Assessment Determination
<p>If any species is categorised as Endangered or Critically Endangered on IUCN’s Red List, or if it appears in the CITES appendices, it cannot be approved for use as Marin trust raw material. Saithe (<i>Pollachius virens</i>) does not appear as Endangered or Critically Endangered on IUCN’s Red List, and does not appear in CITES appendices; therefore, <i>Pollachius virens</i> is eligible for approval for use as Marin trust by-product raw material.</p> <p>This stock is managed under a management plan put in place by the Icelandic Ministry of Food, Agriculture and Fisheries.</p> <p>The stock is subject to annual stock assessment conducted by ICES, which incorporates all commercial landings. Therefore C1.1 is met. The latest stock assessment concluded that SSB is currently nearly three times larger than the target reference point level, and therefore C1.2 is also met.</p> <p>Therefore, saithe (<i>Pollachius virens</i>) in ICES Division 5a is APPROVED for the production of fishmeal and fish oil under the current MarinTrust v2.3 by-products.</p>
Fishery Assessment Peer Review Comments
<p>The assessor correctly classified saithe (<i>Pollachius virens</i>) in ICES Division 5a under category C, as the stock is managed and reference points are defined to assess the stock status against.</p> <p>Fishery removals from the stock are considered in the stock assessment process, and the most recent stock assessment shows that the stock is considered to have a biomass above the limit reference point. Consequently, the fishery passes both clauses C1.1 and C1.2.</p> <p>Therefore, saithe (<i>Pollachius virens</i>) in ICES Division 5a is APPROVED for the production of fishmeal and fish oil under the current MarinTrust V2.3 by-products standards.</p>
Notes for On-site Auditor

Species Categorisation

NB: If any species is categorised as Endangered or Critically Endangered on the IUCN Red List, or if it appears in CITES Appendix 1, it **cannot** be approved for use as an MarinTrust raw material.

IUCN Red list Category

By-product material from a species listed by IUCN (the International Union for Conservation of Nature) under the Red List for the following categories shall immediately fail the assessment;

- EXTINCT (E) AND EXTINCT IN THE WILD (EW)
- CRITICALLY ENDANGERED (CR) facing an extremely high risk of extinction in the wild.
- ENDANGERED (EN) facing a very high risk of extinction in the wild.

By-product material may be used from the following categories provided that all clauses in the MarinTrust standard are passed.

- VULNERABLE (VU) facing a high risk of extinction in the wild.
- NEAR THREATENED (NT) does not qualify for above now, but is close or is likely to qualify for, a threatened category in the near future.
- LEAST CONCERN (LC) Widespread and abundant.
- DATA DEFICIENT (DD) and NOT EVALUATED (NE)

Table 3 Species Categorisation Table

Common name	Latin name	Stock	Management	Category	IUCN Red List Category ¹	CITES Appendix 1 ²
Saithe	<i>Pollachius virens</i>	ICES Division 5a	Yes	C	Least Concern ³	No

¹ <https://www.iucnredlist.org/>

² <https://cites.org/eng/app/appendices.php>

³ <https://www.iucnredlist.org/species/190304/45098360>

CATEGORY C SPECIES

In a by-product assessment, Category C species are those which are subject to a species-specific management regime and are usually targeted species in fisheries for human consumption.

Clause C1 should be completed for each Category C species. If there are no Category C species in the fishery under assessment, this section can be deleted. Where a species fails this Clause, it should be assessed as a Category D species instead.

Species Name		Saithe (<i>Pollachius virens</i>)	
C1	Category C Stock Status - Minimum Requirements		
	C1.1	Fishery removals of the species in the fishery under assessment are included in the stock assessment process, OR are considered by scientific authorities to be negligible.	PASS
	C1.2	The species is considered, in its most recent stock assessment, to have a biomass above the limit reference point (or proxy), OR removals by the fishery under assessment are considered by scientific authorities to be negligible.	PASS
			Clause outcome: PASS

C1.1 Fishery removals of the species in the fishery under assessment are included in the stock assessment process, OR are considered by scientific authorities to be negligible.

This stock is subject to regular assessment by the ICES Northwestern Working Group (NWWG). The most recent assessment was conducted in 2024 using a separable catch-at-age model which utilised catches in the model and the forecast. The assessment also incorporated catch-at-age and age-disaggregated abundance indices from the Icelandic bottom trawl survey. Discarding is considered negligible (ICES 2024).

The 2024 catch advice states that “ICES advises that when the Icelandic management plan is applied, catches in the fishing year 1 September 2024 to 31 August 2025 should be no more than 66 705 tonnes” (ICES 2024).

Catches are presented in the figure below:

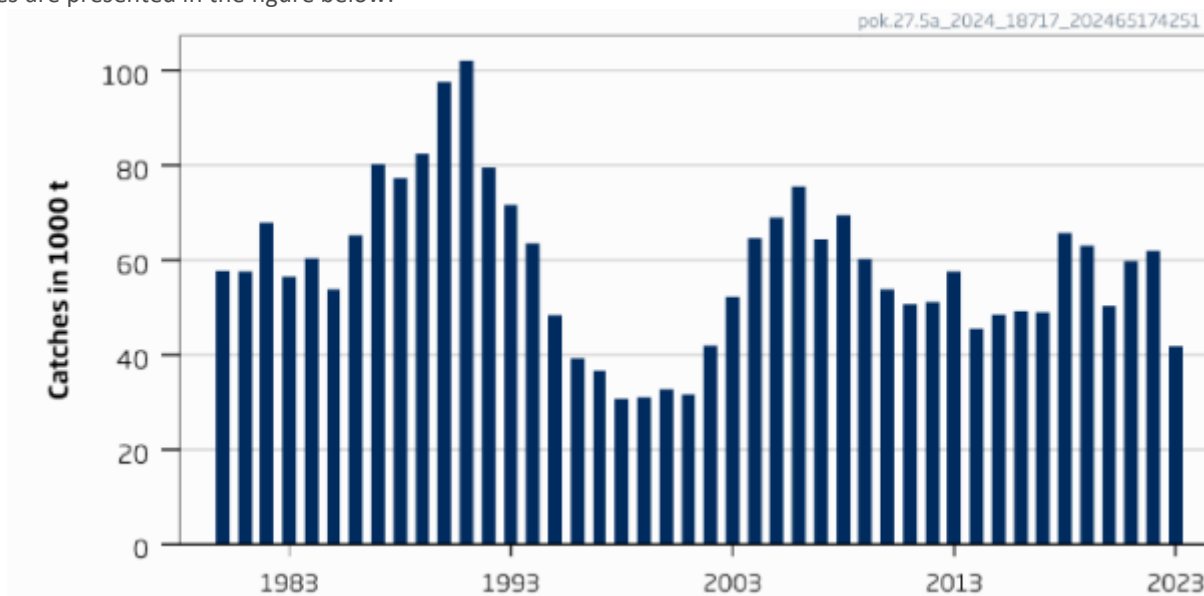


Figure 1. Saithe in ICES 5a: catches (ICES 2024)

Therefore, fishery removals of the species in the fishery under assessment are included in the stock assessment process and therefore the stock PASSES clause C1.1.

C1.2 The species is considered, in its most recent stock assessment, to have a biomass above the limit reference point (or proxy), OR removals by the fishery under assessment are considered by scientific authorities to be negligible.

The annual ICES catch recommendation provides an indication of the status of the stock relative to established reference points. The target reference points MSY $B_{trigger}$, B_{pa} , and MGT $B_{trigger}$ are set at 61,000t. The limit reference point B_{lim} is set at 44,000t. The 2024 stock assessment included a projection for estimated SSB in 2025, placing it at 159,400t, nearly three times larger than the target reference point level.

The 2024 catch advice states, "Fishing pressure on this stock is below HR_{MGT} , HR_{pa} , and HR_{lim} ; spawning-stock size is above MGT $B_{trigger}$, B_{pa} , and B_{lim} " (ICES 2024).

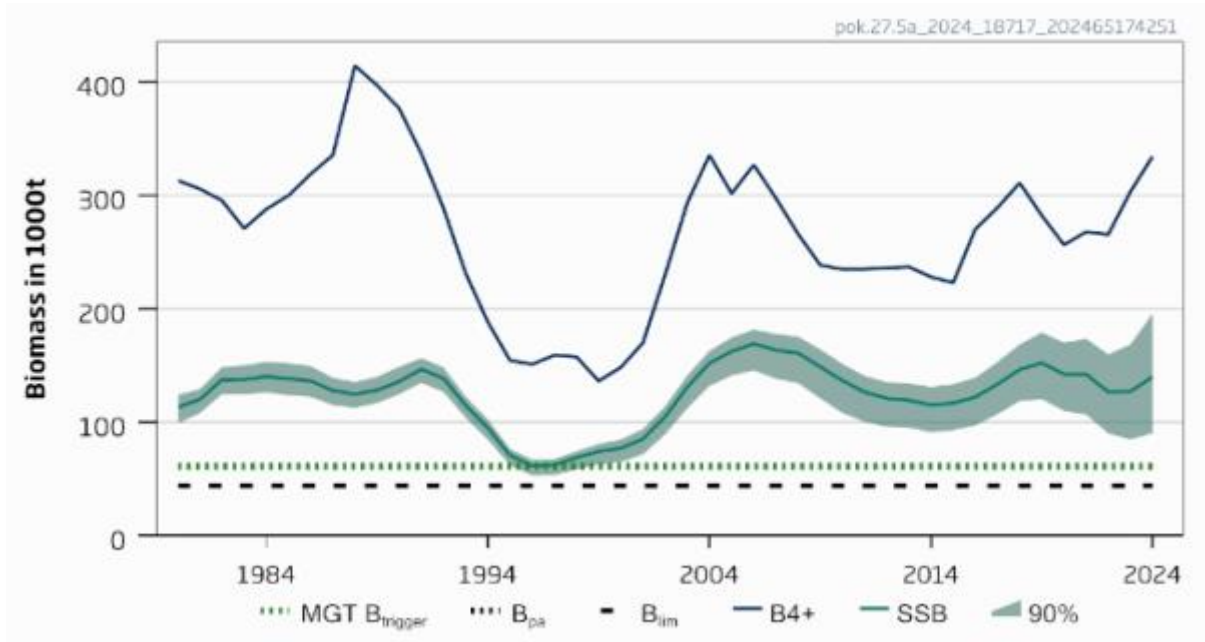


Figure 2. Saithe in ICES Division 5a: estimated biomass relative to current reference points (ICES 2024)

Therefore, the species is considered, in its most recent stock assessment, to have a biomass above the limit reference point (or proxy) and it PASSES clause C1.2.

References

ICES (2024). Saithe (*Pollachius virens*) in Division 5.a (Iceland grounds). ICES Advice: Recurrent Advice. Report. <https://doi.org/10.17895/ices.advice.25019468.v1>

Links

MarinTrust Standard clause	1.3.2.2
FAO CCRF	7.5.3
GSSI	D.3.04, D5.01