



MarinTrust Standard V2

By-product Fishery Assessment

FRA27

Hake (*Merluccius merluccius*)

in ICES Subareas 4, 6, and 7, and

Divisions 3a and 8a, b, & d

MarinTrust Programme

Unit C, Printworks

22 Amelia Street

London

SE17 3BZ

E: standards@marin-trust.com

T: +44 2039 780 819

Table 1 Application details and summary of the assessment outcome

Fishery Under Assessment	Species:	Hake (<i>Merluccius merluccius</i>)
	Geographical area:	FAO 27
	Country of origin of the product:	France
	Stock:	ICES Subareas 4, 6, and 7, and Divisions 3a and 8a, b, & d
Date	September 2024	
Report Code	FRA27	
Assessor	Sam Peacock	
Country of origin of the product - PASS	France	
Country of origin of the product - FAIL	None	

Application details and summary of the assessment outcome			
Company Name(s): Concarneau, Copalis Industrie			
Country: France			
Email address:		Applicant Code:	
Certification Body Details			
Name of Certification Body:		NSF / Global Trust Certification Ltd.	
Assessor	Peer Reviewer	Assessment Days	Initial/Surveillance/Re-approval
Sam Peacock	Matthew Jew	0.2	Surveillance 1
Assessment Period	September 2024 – September 2025		

Scope Details	
Main Species	Hake (<i>Merluccius merluccius</i>)
Stock	ICES Subareas 4, 6, and 7, and Divisions 3a and 8a, b, & d
Fishery Location	FAO 27
Management Authority (Country/ State)	France
Gear Type(s)	Longline, gillnet, trawl, others
Outcome of Assessment	
Peer Review Evaluation	Agree with assessor's recommendation
Recommendation	APPROVED

Table 2. Assessment Determination

Assessment Determination
<p>If any species is categorised as Endangered or Critically Endangered on IUCN’s Red List, or if it appears in the CITES appendices, it cannot be approved for use as Marin trust raw material. Hake (<i>Merluccius merluccius</i>) does not appear as Endangered or Critically Endangered on IUCN’s Red List, and does not appear in CITES appendices; therefore, <i>Merluccius merluccius</i> is eligible for approval for use as Marin trust by-product raw material.</p> <p>This stock is managed under the EU multiannual plan (MAP) for stocks in the Western Waters and adjacent areas. The MAP has not been adopted by Norway or the UK, and is not used as the basis for the ICES advice.</p> <p>The stock is subject to annual stock assessment conducted by ICES, which incorporates all commercial landings. Therefore C1.1 is met. The latest stock assessment concluded that SSB is currently larger than the target reference point level, and therefore C1.2 is also met.</p> <p>Therefore, hake (<i>Merluccius merluccius</i>) in ICES Subareas 4, 6, and 7, and Divisions 3a and 8a, b, & d is APPROVED for the production of fishmeal and fish oil under the current MarinTrust v2.3 by-products.</p>
Fishery Assessment Peer Review Comments
<p>The assessor correctly classified hake (<i>Merluccius merluccius</i>) in ICES Subareas 4, 6, and 7, and Divisions 3a and 8a, b, & d as Category C, the stock is subject to a specific management regime.</p> <p>Fishery removals are considered in the stock assessment process. The most recent stock assessment shows that the stock is above MSY $B_{trigger}$, B_{pa}, and B_{lim}. Therefore, the stock is considered to have biomass above the limit reference point (or proxy). It passes Category C.</p> <p>Hake (<i>Merluccius merluccius</i>) in ICES Subareas 4, 6, and 7, and Divisions 3a and 8a, b, & d passes both clauses (C1.1 and C1.2) and therefore should be approved under the MarinTrust Standard v.2.3</p>
Notes for On-site Auditor
<p>N/A</p>

Species Categorisation

NB: If any species is categorised as Endangered or Critically Endangered on the IUCN Red List, or if it appears in CITES Appendix 1, it **cannot** be approved for use as an MarinTrust raw material.

IUCN Red list Category

By-product material from a species listed by IUCN (the International Union for Conservation of Nature) under the Red List for the following categories shall immediately fail the assessment;

- EXTINCT (E) AND EXTINCT IN THE WILD (EW)
- CRITICALLY ENDANGERED (CR) facing an extremely high risk of extinction in the wild.
- ENDANGERED (EN) facing a very high risk of extinction in the wild.

By-product material may be used from the following categories provided that all clauses in the MarinTrust standard are passed.

- VULNERABLE (VU) facing a high risk of extinction in the wild.
- NEAR THREATENED (NT) does not qualify for above now, but is close or is likely to qualify for, a threatened category in the near future.
- LEAST CONCERN (LC) Widespread and abundant.
- DATA DEFICIENT (DD) and NOT EVALUATED (NE)

Table 3 Species Categorisation Table

Common name	Latin name	Stock	Management	Category	IUCN Red List Category ¹	CITES Appendix 1 ²
Hake	<i>Merluccius merluccius</i>	ICES Subareas 4, 6, and 7, and Divisions 3a and 8a, b, & d	Yes	C	Least Concern ³	No

¹ <https://www.iucnredlist.org/>

² <https://cites.org/eng/app/appendices.php>

³ <https://www.iucnredlist.org/species/198562/84946555>

CATEGORY C SPECIES

In a by-product assessment, Category C species are those which are subject to a species-specific management regime and are usually targeted species in fisheries for human consumption.

Clause C1 should be completed for each Category C species. If there are no Category C species in the fishery under assessment, this section can be deleted. Where a species fails this Clause, it should be assessed as a Category D species instead.

Species Name		Hake (<i>Merluccius merluccius</i>)	
C1	Category C Stock Status - Minimum Requirements		
	C1.1	Fishery removals of the species in the fishery under assessment are included in the stock assessment process, OR are considered by scientific authorities to be negligible.	PASS
	C1.2	The species is considered, in its most recent stock assessment, to have a biomass above the limit reference point (or proxy), OR removals by the fishery under assessment are considered by scientific authorities to be negligible.	PASS
			Clause outcome: PASS

C1.1 Fishery removals of the species in the fishery under assessment are included in the stock assessment process, OR are considered by scientific authorities to be negligible.

This stock is subject to regular assessment by the ICES Working Group for the Bay of Biscay and the Iberian Waters Ecoregion (WGBIE). The most recent assessment was conducted in 2024 using a length-based and sex-disaggregated assessment, which incorporated commercial catches, five survey indices, a constant maturity estimate, and sex- and age-dependent natural mortality. Most discards are also included in the assessment (ICES 2024).

The 2024 catch advice states that “ICES advises that when the MSY approach is applied, catches in 2025 should be no more than 52 466 tonnes” (ICES 2024).

Catches are presented in the figure below:

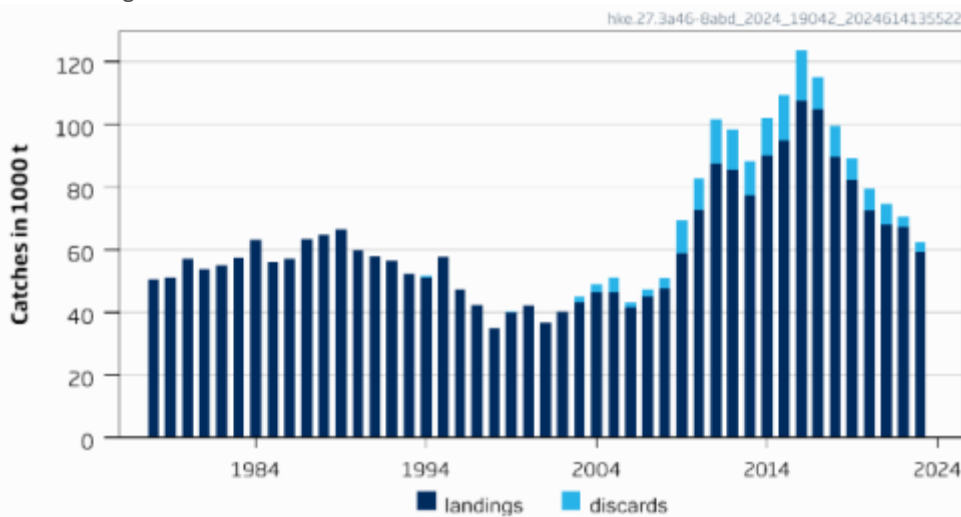


Figure 1. Hake in ICES Subareas 4, 6, and 7, and in Divisions 3a and 8a,b,d: catches (ICES 2024)

Therefore, fishery removals of the species in the fishery under assessment are included in the stock assessment process and therefore the stock PASSES clause C1.1.

C1.2 The species is considered, in its most recent stock assessment, to have a biomass above the limit reference point (or proxy), OR removals by the fishery under assessment are considered by scientific authorities to be negligible.

The annual ICES catch recommendation provides an indication of the status of the stock relative to established reference points. The target reference points MSY $B_{trigger}$, B_{pa} , and MAP MSY $B_{trigger}$ are set at 78,405t. The limit reference points B_{lim} and MAP B_{lim} are set at 61,563t. The 2024 stock assessment produced a short-term projection for female-only SSB in 2025 of 103,963t, significantly above the target reference point level.

The 2024 catch advice states, “Fishing pressure on the stock is below F_{MSY} , and spawning-stock size is above MSY $B_{trigger}$, B_{pa} , and B_{lim} ” (ICES 2024).

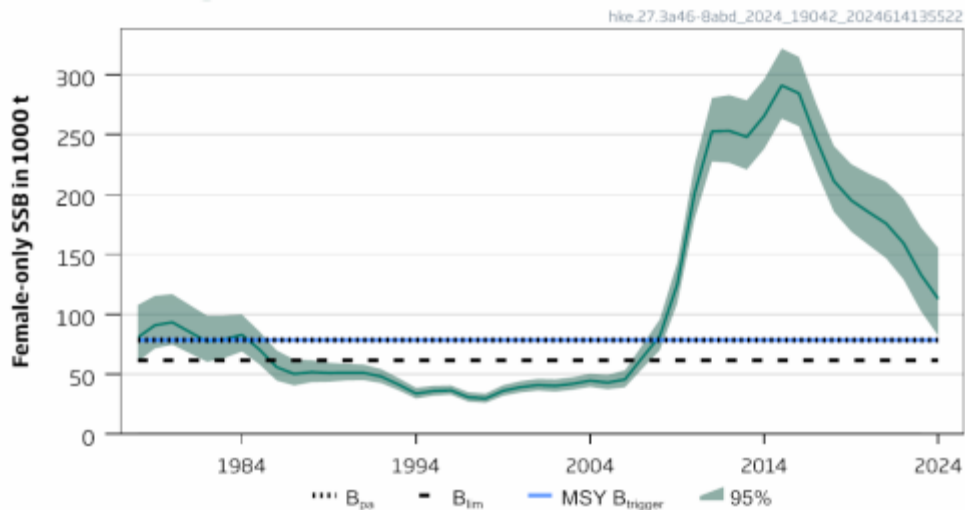


Figure 2. Hake in ICES Subareas 4, 6, and 7, and in Divisions 3a and 8a,b,d: female-only SSB relative to current reference points (ICES 2024)

Therefore, the species is considered, in its most recent stock assessment, to have a biomass above the limit reference point (or proxy) and it PASSES clause C1.2.

References

ICES (2024). Hake (*Merluccius merluccius*) in subareas 4, 6, and 7, and in divisions 3.a, 8.a–b, and 8.d, Northern stock (Greater North Sea, Celtic Seas, and the northern Bay of Biscay). ICES Advice: Recurrent Advice. Report. <https://doi.org/10.17895/ices.advice.25019303.v1>

Links

MarinTrust Standard clause	1.3.2.2
FAO CCRF	7.5.3
GSSI	D.3.04, D5.01