



MarinTrust Standard V2

By-product Fishery Assessment

GBR17

Cod (*Gadus morhua*)

in ICES Subareas 1 & 2

MarinTrust Programme

Unit C, Printworks

22 Amelia Street

London

SE17 3BZ

E: standards@marin-trust.com

T: +44 2039 780 819

Table 1 Application details and summary of the assessment outcome

Fishery Under Assessment	Species:	Cod (<i>Gadus morhua</i>)
	Geographical area:	FAO 27 northeast Atlantic Ocean
	Country of origin of the product:	UK & Ireland
	Stock:	Cod in ICES Subareas 1 & 2 (Northeast Arctic cod)
Date	May 2024	
Report Code	GBR17	
Assessor	Sam Peacock	
Country of origin of the product - PASS	UK & Ireland	
Country of origin of the product - FAIL	n/a	

Application details and summary of the assessment outcome			
Company Name(s): Grimsby (Pelagia)			
Country: UK			
Email address:		Applicant Code:	
Certification Body Details			
Name of Certification Body:		NSF / Global Trust Certification Ltd.	
Assessor	Peer Reviewer	Assessment Days	Initial/Surveillance/Re-approval
Sam Peacock	Matthew Jew	0.2	Re-approval
Assessment Period		May 2024 – May 2025	

Scope Details	
Main Species	Cod (<i>Gadus morhua</i>)
Stock	Cod in ICES Subareas 1 & 2 (Northeast Arctic cod)
Fishery Location	FAO 27 northeast Atlantic Ocean
Management Authority (Country/ State)	UK, EU, Norway, Russia
Gear Type(s)	Demersal trawls, gillnets, longlines
Outcome of Assessment	
Peer Review Evaluation	Agree with assessor's recommendation
Recommendation	APPROVED

Table 2. Assessment Determination

Assessment Determination
<p>If any species is categorised as Endangered or Critically Endangered on IUCN’s Red List, or if it appears in the CITES appendices, it cannot be approved for use as Marin trust raw material. Cod (<i>Gadus morhua</i>) does not appear as Endangered or Critically Endangered on IUCN’s Red List, and does not appear in CITES appendices; therefore, <i>Gadus morhua</i> is eligible for approval for use as Marin trust by-product raw material.</p> <p>Cod in ICES subareas 1 & 2 is managed under a fisheries management plan put in place by the Joint Russian-Norwegian Fisheries Commission (JRNFC). The stock is managed relative to reference points and was assessed under Category C.</p> <p>Cod in the Northeast Arctic has historically been subject to annual stock assessment by ICES. Due to the war in Ukraine, Russian participation in ICES was suspended in March 2022. There does not appear to have been any new stock assessment conducted for this stock since that time; therefore the most recent stock assessment remains that identified in previous MT assessments, conducted in 2021. This stock assessment incorporated catch and survey data and considers discarding to be negligible, and C1.1 is met. Stock biomass was estimated to be substantially higher than the limit reference point level, and C1.2 is met.</p> <p>Therefore, Cod (<i>Gadus morhua</i>) in ICES Subareas 1 & 2 is APPROVED for the production of fishmeal and fish oil under the current MarinTrust v2.3 by-products.</p>
Fishery Assessment Peer Review Comments
<p>The assessor correctly classified cod (<i>Gadus morhua</i>) in ICES Subareas 1 & 2 as Category C, the stock is subject to a specific management regime.</p> <p>Fishery removals are considered in the stock assessment process. The most recent stock assessment shows that the stock is above B_{MSY}, B_{pa}, and B_{lim}. Therefore, the stock is considered to have biomass above the limit reference point (or proxy). It passes Category C.</p> <p>Cod (<i>Gadus morhua</i>) in ICES Subareas 1 & 2 passes both clauses (C1.1 and C1.2) and therefore should be approved under the MarinTrust Standard v.2.3</p>
Notes for On-site Auditor
N/A

Species Categorisation

NB: If any species is categorised as Endangered or Critically Endangered on the IUCN Red List, or if it appears in CITES Appendix 1, it **cannot** be approved for use as an MarinTrust raw material.

IUCN Red list Category

By-product material from a species listed by IUCN (the International Union for Conservation of Nature) under the Red List for the following categories shall immediately fail the assessment;

- EXTINCT (E) AND EXTINCT IN THE WILD (EW)
- CRITICALLY ENDANGERED (CR) facing an extremely high risk of extinction in the wild.
- ENDANGERED (EN) facing a very high risk of extinction in the wild.

By-product material may be used from the following categories provided that all clauses in the MarinTrust standard are passed.

- VULNERABLE (VU) facing a high risk of extinction in the wild.
- NEAR THREATENED (NT) does not qualify for above now, but is close or is likely to qualify for, a threatened category in the near future.
- LEAST CONCERN (LC) Widespread and abundant.
- DATA DEFICIENT (DD) and NOT EVALUATED (NE)

Table 3 Species Categorisation Table

Common name	Latin name	Stock	Management	Category	IUCN Red List Category ¹	CITES Appendix 1 ²
Cod	<i>Gadus morhua</i>	Cod in ICES Subareas 1 & 2 (Northeast Arctic cod)	Yes	C	Vulnerable ³	No

¹ <https://www.iucnredlist.org/>

² <https://cites.org/eng/app/appendices.php>

³ <https://www.iucnredlist.org/species/8784/12931575>

CATEGORY C SPECIES

In a by-product assessment, Category C species are those which are subject to a species-specific management regime and are usually targeted species in fisheries for human consumption.

Clause C1 should be completed for each Category C species. If there are no Category C species in the fishery under assessment, this section can be deleted. Where a species fails this Clause, it should be assessed as a Category D species instead.

Species Name		Cod (<i>Gadus morhua</i>)	
C1	Category C Stock Status - Minimum Requirements		
	C1.1	Fishery removals of the species in the fishery under assessment are included in the stock assessment process, OR are considered by scientific authorities to be negligible.	PASS
	C1.2	The species is considered, in its most recent stock assessment, to have a biomass above the limit reference point (or proxy), OR removals by the fishery under assessment are considered by scientific authorities to be negligible.	PASS
			Clause outcome: PASS

C1.1 Fishery removals of the species in the fishery under assessment are included in the stock assessment process, OR are considered by scientific authorities to be negligible.

Cod in ICES subareas 1 & 2 is usually subjected to annual stock assessment by the ICES Arctic Fisheries Working Group (AFWG). However, new assessments do not appear to have been conducted since the ejection of Russia from ICES due to the war in Ukraine in 2022. The most recent assessment was conducted in 2021, implementing an age-based analytical assessment which utilised catches in the model and forecast. The assessment also incorporated four survey indices, annual maturity data, bycatch, and natural mortality rates from stomach sampling. Discards were considered negligible.

The 2021 catch advice states that “ICES advises that when the Joint Norwegian–Russian Fisheries Commission (JRNFC) management plan is applied, catches in 2022 should be no more than 708 480 tonnes.” (ICES 2021).

Catches are presented in the figure below:

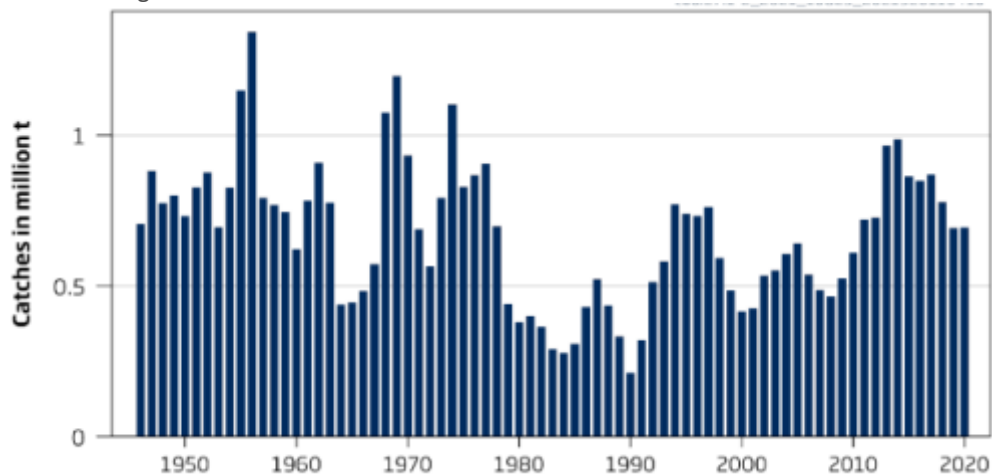


Figure 1. Cod in ICES subareas 1 & 2, catches (ICES 2021)

Therefore, fishery removals of the species in the fishery under assessment are included in the stock assessment process and therefore the stock PASSES clause C1.1.

C1.2 The species is considered, in its most recent stock assessment, to have a biomass above the limit reference point (or proxy), OR removals by the fishery under assessment are considered by scientific authorities to be negligible.

The regular ICES catch advice provides an indication of the status of the stock relative to established reference points. The target reference points $MSY B_{trigger}$, SSB_{mgt} and B_{pa} have been set at 460,000t; the limit reference point B_{lim} has been set at 220,000t. The 2021 catch advice projected an estimated SSB in 2022 of 696,371t (ICES 2021)

The 2021 ICES catch advice stated that “Fishing pressure on the stock is at F_{MSY} between F_{pa} and F_{lim} and spawning-stock size is above $MSY B_{trigger}$, B_{pa} , and B_{lim} .” (ICES 2021). See figure 2, below.

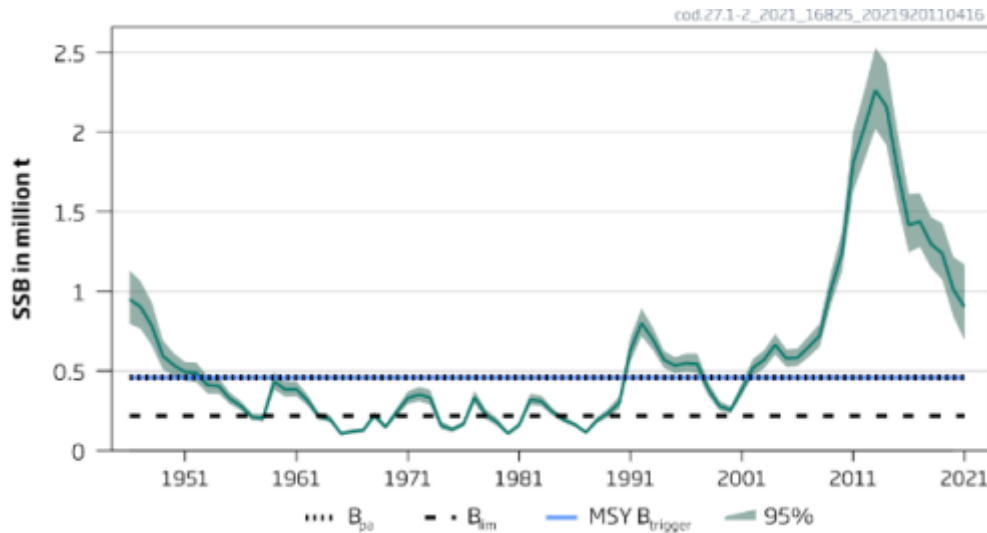


Figure 2. Cod in ICES subareas 1 & 2, SSB over time (ICES 2021).

Therefore, the species is considered, in its most recent stock assessment, to have a biomass above the limit reference point (or proxy) and it PASSES clause C1.2.

References

ICES (2021). Cod (*Gadus morhua*) in subareas 1 and 2 (Northeast Arctic). ICES Advice: Recurrent Advice. Report. <https://doi.org/10.17895/ices.advice.7741>

Links

MarinTrust Standard clause	1.3.2.2
FAO CCRF	7.5.3
GSSI	D.3.04, D5.01