



MarinTrust Standard V2

By-product Fishery Assessment

GBR24

Greenland halibut

(Reinhardtius hippoglossoides)

in ICES Subareas 5, 6, 12 and 14

MarinTrust Programme

Unit C, Printworks

22 Amelia Street

London

SE17 3BZ

E: standards@marin-trust.com

T: +44 2039 780 819

Table 1 Application details and summary of the assessment outcome

Fishery Under Assessment	Species:	Greenland halibut (<i>Reinhardtius hippoglossoides</i>)
	Geographical area:	FAO 27
	Country of origin of the product:	UK
	Stock:	ICES Subareas 5, 6, 12 and 14
Date	August 2024	
Report Code	GBR24	
Assessor	Sam Peacock	
Country of origin of the product - PASS	UK	
Country of origin of the product - FAIL	None	

Application details and summary of the assessment outcome			
Company Name(s): Aberdeen (Pelagia)			
Country: UK			
Email address:		Applicant Code:	
Certification Body Details			
Name of Certification Body:		NSF / Global Trust Certification Ltd.	
Assessor	Peer Reviewer	Assessment Days	Initial/Surveillance/Re-approval
Sam Peacock	Léa Lebechnech	0.2	Surveillance 1
Assessment Period	August 2024 – August 2025		

Scope Details	
Main Species	Greenland halibut (<i>Reinhardtius hippoglossoides</i>)
Stock	ICES Subareas 5, 6, 12 and 14
Fishery Location	FAO 27
Management Authority (Country/ State)	UK
Gear Type(s)	Bottom trawl, gillnet, longline
Outcome of Assessment	
Peer Review Evaluation	Agree with the assessor's determination
Recommendation	APPROVED

Table 2. Assessment Determination

Assessment Determination
<p>If any species is categorised as Endangered or Critically Endangered on IUCN’s Red List, or if it appears in the CITES appendices, it cannot be approved for use as Marin trust raw material. Greenland halibut (<i>Reinhardtius hippoglossoides</i>) does not appear as Endangered or Critically Endangered on IUCN’s Red List, and does not appear in CITES appendices; therefore, <i>Reinhardtius hippoglossoides</i> is eligible for approval for use as Marin trust by-product raw material.</p> <p>This stock is not managed under a formal management plan.</p> <p>The stock is subject to annual stock assessment conducted by ICES, which incorporates all commercial landings. Therefore C1.1 is met. The latest stock assessment concluded that SSB is slightly below the target reference point, but above the limit reference point level, and therefore C1.2 is also met.</p> <p>Therefore, Greenland halibut (<i>Reinhardtius hippoglossoides</i>) in ICES Subareas 5, 6, 12 and 14 is APPROVED for the production of fishmeal and fish oil under the current MarinTrust v2.3 by-products.</p>
Fishery Assessment Peer Review Comments
<p>The assessor correctly classified Greenland halibut (<i>Reinhardtius hippoglossoides</i>) in ICES Subareas 5, 6, 12 and 14 under category C, as reference points are defined to assess the stock status against.</p> <p>Fishery removals from the stock are considered in the stock assessment process, and the most recent stock assessment shows that the stock has a biomass above the limit reference point. Consequently, the fishery passes both clauses C1.1 and C1.2.</p> <p>Therefore, Greenland halibut in ICES Subareas 5, 6, 12 and 14 is APPROVED for the production of fishmeal and fish oil under the current MarinTrust V2.3 by-products standards.</p>
Notes for On-site Auditor

Species Categorisation

NB: If any species is categorised as Endangered or Critically Endangered on the IUCN Red List, or if it appears in CITES Appendix 1, it **cannot** be approved for use as an MarinTrust raw material.

IUCN Red list Category

By-product material from a species listed by IUCN (the International Union for Conservation of Nature) under the Red List for the following categories shall immediately fail the assessment;

- EXTINCT (E) AND EXTINCT IN THE WILD (EW)
- CRITICALLY ENDANGERED (CR) facing an extremely high risk of extinction in the wild.
- ENDANGERED (EN) facing a very high risk of extinction in the wild.

By-product material may be used from the following categories provided that all clauses in the MarinTrust standard are passed.

- VULNERABLE (VU) facing a high risk of extinction in the wild.
- NEAR THREATENED (NT) does not qualify for above now, but is close or is likely to qualify for, a threatened category in the near future.
- LEAST CONCERN (LC) Widespread and abundant.
- DATA DEFICIENT (DD) and NOT EVALUATED (NE)

Table 3 Species Categorisation Table

Common name	Latin name	Stock	Management	Category	IUCN Red List Category ¹	CITES Appendix 1 ²
Greenland halibut	<i>Reinhardtius hippoglossoides</i>	ICES Subareas 5, 6, 12 and 14	Yes	C	Near Threatened ³	No

¹ <https://www.iucnredlist.org/>

² <https://cites.org/eng/app/appendices.php>

³ <https://www.iucnredlist.org/species/18227054/148037259>

CATEGORY C SPECIES

In a by-product assessment, Category C species are those which are subject to a species-specific management regime and are usually targeted species in fisheries for human consumption.

Clause C1 should be completed for each Category C species. If there are no Category C species in the fishery under assessment, this section can be deleted. Where a species fails this Clause, it should be assessed as a Category D species instead.

Species Name		Greenland halibut (<i>Reinhardtius hippoglossoides</i>)	
C1	Category C Stock Status - Minimum Requirements		
	C1.1	Fishery removals of the species in the fishery under assessment are included in the stock assessment process, OR are considered by scientific authorities to be negligible.	PASS
	C1.2	The species is considered, in its most recent stock assessment, to have a biomass above the limit reference point (or proxy), OR removals by the fishery under assessment are considered by scientific authorities to be negligible.	PASS
			Clause outcome: PASS

C1.1 Fishery removals of the species in the fishery under assessment are included in the stock assessment process, OR are considered by scientific authorities to be negligible.

This stock is subject to regular assessment by the ICES Northwestern Working Group (NWWG). The most recent assessment was conducted in 2024 using an analytical assessment which utilised catches in the model and the forecast. The assessment also incorporated length composition by gear, one combined survey biomass index, and data from the Icelandic bottom trawl survey. Discarding is considered negligible (ICES 2024).

The 2024 catch advice states that “ICES advises that when the MSY approach is applied, catches in 2025 should be no more than 17 890 tonnes.” (ICES 2024).

Catches are presented in the figure below:

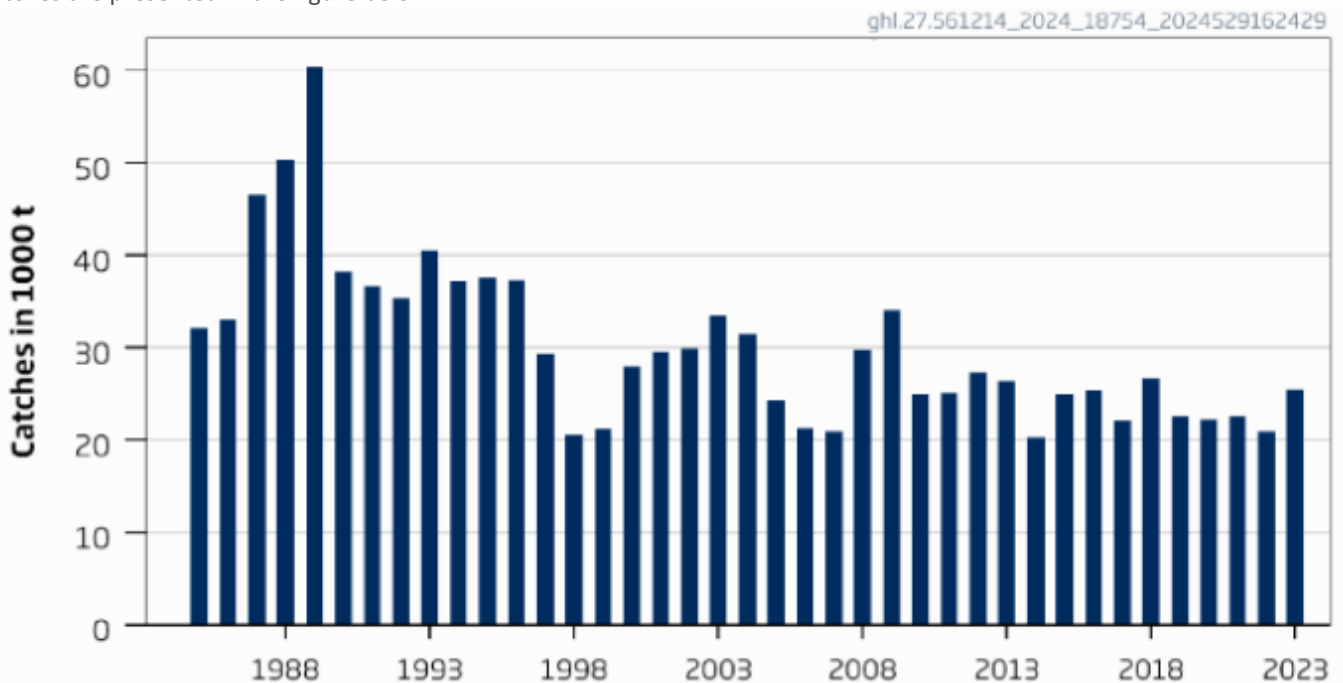


Figure 1. Greenland halibut in ICES Subareas 5, 6, 12 and 14: catches (ICES 2024)

Therefore, fishery removals of the species in the fishery under assessment are included in the stock assessment process and therefore the stock PASSES clause C1.1.

C1.2 The species is considered, in its most recent stock assessment, to have a biomass above the limit reference point (or proxy), OR removals by the fishery under assessment are considered by scientific authorities to be negligible.

The annual ICES catch recommendation provides an indication of the status of the stock relative to established reference points. The target reference points $MSY B_{trigger}$ and B_{pa} are set at 24,895t. The limit reference point B_{lim} is set at 18,213t. The 2024 stock assessment included a projection for estimated SSB in 2025, placing it at 23,971t, slightly below the target reference point level but above the limit reference point.

The 2024 catch advice states, "Fishing pressure on the stock is above F_{MSY} and F_{pa} and below F_{lim} . Spawning-stock size is below $MSY B_{trigger}$ and B_{pa} , and above B_{lim} " (ICES 2024). Estimated SSB is shown in Figure 2, below.

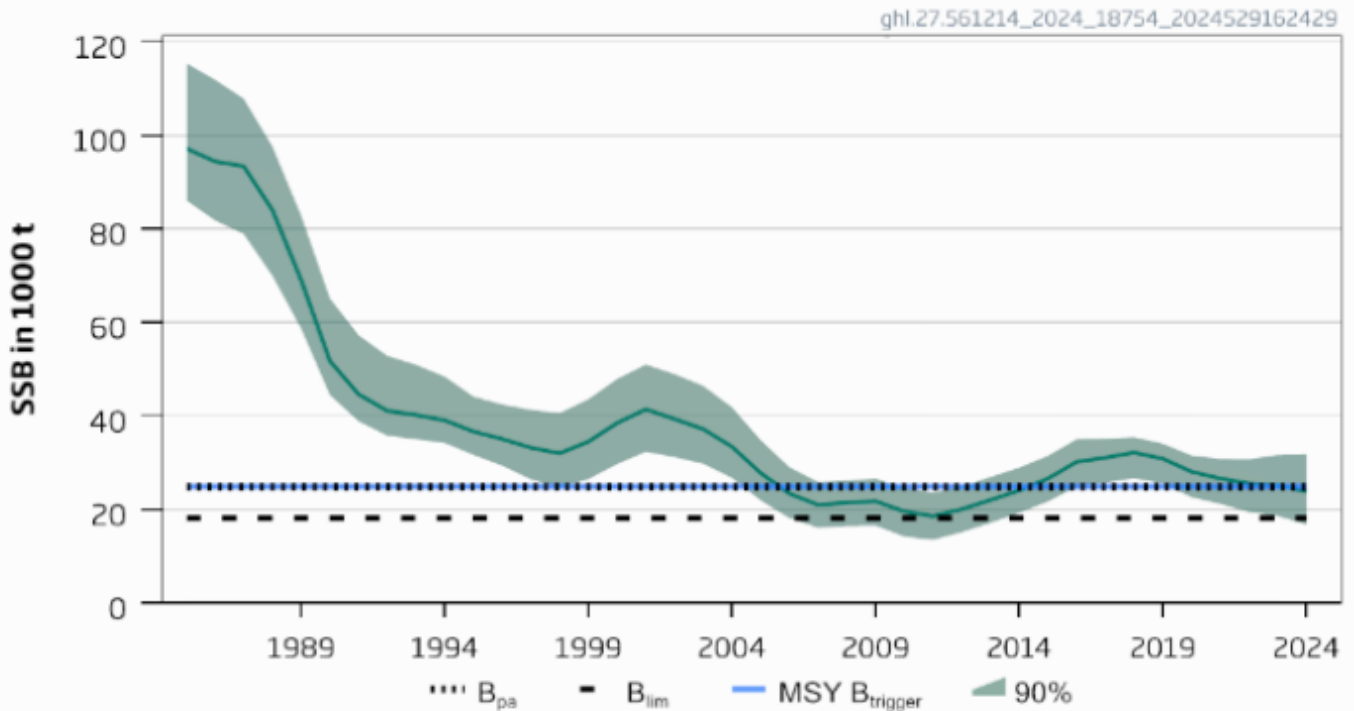


Figure 2. Greenland halibut in ICES Subareas 5, 6, 12 and 14: estimated biomass relative to current reference points (ICES 2024)

Therefore, the species is considered, in its most recent stock assessment, to have a biomass above the limit reference point (or proxy) and it PASSES clause C1.2.

References

ICES (2024). Greenland halibut (*Reinhardtius hippoglossoides*) in subareas 5, 6, 12, and 14 (Iceland and Faroes grounds, West of Scotland, North of Azores, East of Greenland). ICES Advice: Recurrent Advice. Report. <https://doi.org/10.17895/ices.advice.25019246.v1>

Links

MarinTrust Standard clause	1.3.2.2
FAO CCRF	7.5.3
GSSI	D.3.04, D5.01