



MarinTrust Standard V2

By-product Fishery Assessment

GBR28

Plaice (*Pleuronectes platessa*)

in ICES Subarea 4 and Subdivision 20

MarinTrust Programme

Unit C, Printworks

22 Amelia Street

London

SE17 3BZ

E: standards@marin-trust.com

T: +44 2039 780 819

Table 1 Application details and summary of the assessment outcome

Fishery Under Assessment	Species:	Plaice (<i>Pleuronectes platessa</i>)
	Geographical area:	FAO 27
	Country of origin of the product:	UK, Ireland
	Stock:	ICES Subarea 4 and Subdivision 20
Date	November 2024	
Report Code	GBR28	
Assessor	Sam Peacock	
Country of origin of the product - PASS	UK, Ireland	
Country of origin of the product - FAIL	None	

Application details and summary of the assessment outcome			
Company Name(s): Grimsby (Pelagia), Aberdeen (Pelagia), Lunar FPR Ltd			
Country: UK			
Email address:		Applicant Code:	
Certification Body Details			
Name of Certification Body:		NSF / Global Trust Certification Ltd.	
Assessor	Peer Reviewer	Assessment Days	Initial/Surveillance/Re-approval
Sam Peacock	Matthew Jew	0.2	Surveillance 2
Assessment Period	November 2024 – November 2025		

Scope Details	
Main Species	Plaice (<i>Pleuronectes platessa</i>)
Stock	ICES Subarea 4 and Subdivision 20
Fishery Location	FAO 27
Management Authority (Country/ State)	EU, Norway, UK
Gear Type(s)	Beam trawl, otter trawl, other
Outcome of Assessment	
Peer Review Evaluation	Agree with assessor's recommendation
Recommendation	APPROVED

Table 2. Assessment Determination

Assessment Determination
<p>If any species is categorised as Endangered or Critically Endangered on IUCN’s Red List, or if it appears in the CITES appendices, it cannot be approved for use as Marin trust raw material. Plaice (<i>Pleuronectes platessa</i>) does not appear as Endangered or Critically Endangered on IUCN’s Red List, and does not appear in CITES appendices; therefore, <i>Pleuronectes platessa</i> is eligible for approval for use as Marin trust by-product raw material.</p> <p>An EU Multi-Annual Plan is in place for this stock; however there is no agreement with the UK or Norway regarding the MAP, and it is not used as the basis for the ICES advice.</p> <p>The stock is subject to an annual stock assessment by the ICES Working Group on the Assessment of Demersal Stocks in the North Sea and Skagerrak. The most recent stock assessment was conducted in 2024, using all available catch data and five survey indices, therefore C1.1 is met. SSB was estimated by the stock assessment to be more than double the target reference point level, and therefore C1.2 is also met.</p> <p>Therefore, plaice (<i>Pleuronectes platessa</i>) in ICES Subarea 4 and Subdivision 20 is APPROVED for the production of fishmeal and fish oil under the current MarinTrust v2.3 by-products.</p>
Fishery Assessment Peer Review Comments
<p>The assessor correctly classified plaice (<i>Pleuronectes platessa</i>) in ICES Subarea 4 and Subdivision 20 as Category C, the stock is subject to a specific management regime.</p> <p>Fishery removals are considered in the stock assessment process. The most recent stock assessment shows that the stock is above MSY $B_{trigger}$, B_{pa}, and B_{lim}. Therefore, the stock is considered to have biomass above the limit reference point (or proxy). It passes Category C.</p> <p>Plaice (<i>Pleuronectes platessa</i>) in ICES Subarea 4 and Subdivision 20 passes both clauses (C1.1 and C1.2) and therefore should be approved under the MarinTrust Standard v.2.3</p>
Notes for On-site Auditor
N/A

Species Categorisation

NB: If any species is categorised as Endangered or Critically Endangered on the IUCN Red List, or if it appears in CITES Appendix 1, it **cannot** be approved for use as an MarinTrust raw material.

IUCN Red list Category

By-product material from a species listed by IUCN (the International Union for Conservation of Nature) under the Red List for the following categories shall immediately fail the assessment;

- EXTINCT (E) AND EXTINCT IN THE WILD (EW)
- CRITICALLY ENDANGERED (CR) facing an extremely high risk of extinction in the wild.
- ENDANGERED (EN) facing a very high risk of extinction in the wild.

By-product material may be used from the following categories provided that all clauses in the MarinTrust standard are passed.

- VULNERABLE (VU) facing a high risk of extinction in the wild.
- NEAR THREATENED (NT) does not qualify for above now, but is close or is likely to qualify for, a threatened category in the near future.
- LEAST CONCERN (LC) Widespread and abundant.
- DATA DEFICIENT (DD) and NOT EVALUATED (NE)

Table 3 Species Categorisation Table

Common name	Latin name	Stock	Management	Category	IUCN Red List Category ¹	CITES Appendix 1 ²
Plaice	<i>Pleuronectes platessa</i>	ICES Subarea 4 and Subdivision 20	Yes	C	Least Concern ³	No

¹ <https://www.iucnredlist.org/>

² <https://cites.org/eng/app/appendices.php>

³ <https://www.iucnredlist.org/species/135690/135111216>

CATEGORY C SPECIES

In a by-product assessment, Category C species are those which are subject to a species-specific management regime and are usually targeted species in fisheries for human consumption.

Clause C1 should be completed for each Category C species. If there are no Category C species in the fishery under assessment, this section can be deleted. Where a species fails this Clause, it should be assessed as a Category D species instead.

Species Name		Plaice (<i>Pleuronectes platessa</i>)	
C1	Category C Stock Status - Minimum Requirements		
	C1.1	Fishery removals of the species in the fishery under assessment are included in the stock assessment process, OR are considered by scientific authorities to be negligible.	PASS
	C1.2	The species is considered, in its most recent stock assessment, to have a biomass above the limit reference point (or proxy), OR removals by the fishery under assessment are considered by scientific authorities to be negligible.	PASS
			Clause outcome: PASS

C1.1 Fishery removals of the species in the fishery under assessment are included in the stock assessment process, OR are considered by scientific authorities to be negligible.

Plaice in ICES Subarea 4 and Subdivision 20 is subjected to regular stock assessment by the ICES Working Group on the Assessment of Demersal Stocks in the North Sea and Skagerrak (WGNSSK). The most recent assessment was conducted in 2024 using an age-based analytical assessment which used catch data and five survey indices in the model and forecast. Discards, below minimum size landings, and bycatch were included in the assessment where available.

The catch advice states that “ICES advises that when the MSY approach is applied, catches in 2025 should be no more than 176 988 tonnes” (ICES 2024).

Catches are presented in the figure below:

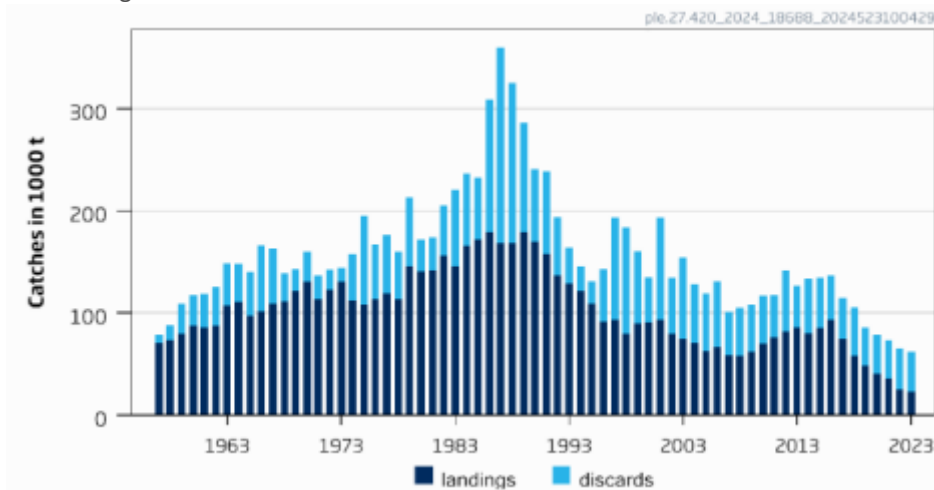


Figure 1. Plaice in ICES Subarea 4 and Subdivision 20: Catches (ICES 2024)

Therefore, fishery removals of the species in the fishery under assessment are included in the stock assessment process and therefore the stock PASSES clause C1.1.

C1.2 The species is considered, in its most recent stock assessment, to have a biomass above the limit reference point (or proxy), OR removals by the fishery under assessment are considered by scientific authorities to be negligible.

The catch advice provides an indication of the current status of the stock relative to established reference points. The target reference points MSY $B_{trigger}$, B_{pa} , and MAP MSY $B_{trigger}$ have been set at 473,850t. The limit reference points B_{lim} and MAP B_{lim}

have been set at 341,003t. The catch advice includes a short-term forecast for SSB in 2025, projecting it will be 1,153,301t, more than double the target reference point level.

The catch advice also states, “Fishing pressure on the stock is below F_{MSY} , and spawning-stock size is above $MSY B_{trigger}$, B_{pa} , and B_{lim} ” (ICES 2024). Estimated SSB relative to reference points is shown in Figure 2 below.

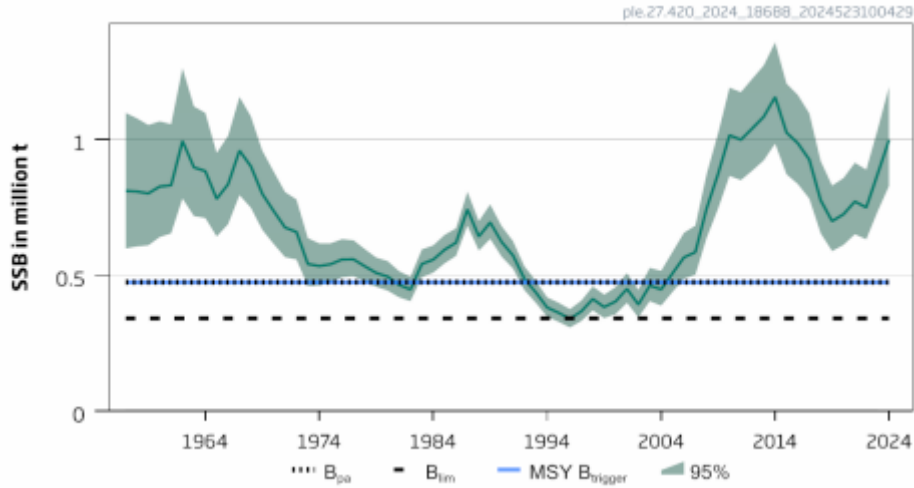


Figure 2. Plaice in ICES Subarea 4 and Subdivision 20: estimated SSB relative to current reference points (ICES 2024)

Therefore, the species is considered, in its most recent stock assessment, to have a biomass above the limit reference point (or proxy) and it PASSES clause C1.2.

References

ICES (2024). Plaice (*Pleuronectes platessa*) in Subarea 4 (North Sea) and Subdivision 20 (Skagerrak). ICES Advice: Recurrent Advice. Report. <https://doi.org/10.17895/ices.advice.25019441.v1>

Links

MarinTrust Standard clause	1.3.2.2
FAO CCRF	7.5.3
GSSI	D.3.04, D5.01