



## MarinTrust Standard V2

### By-product Fishery Assessment

### LVA01

### Herring (*Clupea harengus*)

### in ICES Subdivisions 25-29 and 32

**MarinTrust Programme**

Unit C, Printworks

22 Amelia Street

London

SE17 3BZ

E: [standards@marin-trust.com](mailto:standards@marin-trust.com)

T: +44 2039 780 819

**Table 1 Application details and summary of the assessment outcome**

Fishery Under Assessment	Species:	Herring ( <i>Clupea harengus</i> )
	Geographical area:	FAO 27
	Country of origin of the product:	Latvia
	Stock:	ICES Subdivisions 25-29 and 32
Date	October 2024	
Report Code	LVA01	
Assessor	Sam Peacock	
Country of origin of the product - PASS	Latvia	
Country of origin of the product - FAIL	n/a	

Application details and summary of the assessment outcome			
Company Name(s): Association "Organization of Fishery Producers of Kurzeme"			
Country: Latvia			
Email address:		Applicant Code:	
Certification Body Details			
Name of Certification Body:		NSF / Global Trust Certification Ltd	
Assessor	Peer Reviewer	Assessment Days	Initial/Surveillance/Re-approval
Sam Peacock	Léa Lebechnech	0.2	Surveillance 1
Assessment Period	October 2024 – October 2025		

Scope Details	
Main Species	Herring ( <i>Clupea harengus</i> )
Stock	ICES Subdivisions 25-29 and 32
Fishery Location	FAO27
Management Authority (Country/ State)	EU
Gear Type(s)	Pelagic trawl, trapnets, gillnets, purse seines
Outcome of Assessment	
Peer Review Evaluation	Agree with the assessor's determination
Recommendation	<b>APPROVED</b>

## Table 2. Assessment Determination

Assessment Determination
<p>If any species is categorised as Endangered or Critically Endangered on IUCN’s Red List, or if it appears in the CITES appendices, it cannot be approved for use as Marin trust raw material. Herring (<i>Clupea harengus</i>) does not appear as Endangered or Critically Endangered on IUCN’s Red List, and does not appear in CITES appendices; therefore, <i>Clupea harengus</i> is eligible for approval for use as Marin trust by-product raw material.</p> <p>An EU MAP is in place for this stock; the Russian Federation does not have a management plan in place. The stock is managed relative to established reference points and therefore was assessed under Category C.</p> <p>The most recent stock assessment was conducted in 2024 and utilised all international catch data, therefore C1.1 is met. The stock assessment concluded that SSB is below the target reference point level but above the limit reference point, therefore C1.2 is also met.</p> <p>Therefore, herring (<i>Clupea harengus</i>) in ICES Subdivisions 25-29 and 32 is <b>APPROVED</b> for the production of fishmeal and fish oil under the current MarinTrust v2.3 by-products.</p>
Fishery Assessment Peer Review Comments
<p>The assessor correctly classified herring (<i>Clupea harengus</i>) in ICES Subdivisions 25-29 and 32 under category C, as the stock is managed with established limit reference points.</p> <p>Fishery removals of the species in the fishery under assessment are included in the stock assessment process and the species is considered, in its most recent stock assessment, to have a biomass above the limit reference point (or proxy). Therefore, the stock PASSES clauses C1.1 and C1.2.</p> <p>In conclusion, herring in ICES Subdivisions 25-29 and 32, is <b>APPROVED</b> for the production of fishmeal and fish oil under the current MarinTrust V2.3 by-products standards.</p>
Notes for On-site Auditor

## Species Categorisation

**NB:** If any species is categorised as Endangered or Critically Endangered on the IUCN Red List, or if it appears in CITES Appendix 1, it **cannot** be approved for use as an MarinTrust raw material.

### IUCN Red list Category

By-product material from a species listed by IUCN (the International Union for Conservation of Nature) under the Red List for the following categories shall immediately fail the assessment;

- EXTINCT (E) AND EXTINCT IN THE WILD (EW)
- CRITICALLY ENDANGERED (CR) facing an extremely high risk of extinction in the wild.
- ENDANGERED (EN) facing a very high risk of extinction in the wild.

By-product material may be used from the following categories provided that all clauses in the MarinTrust standard are passed.

- VULNERABLE (VU) facing a high risk of extinction in the wild.
- NEAR THREATENED (NT) does not qualify for above now, but is close or is likely to qualify for, a threatened category in the near future.
- LEAST CONCERN (LC) Widespread and abundant.
- DATA DEFICIENT (DD) and NOT EVALUATED (NE)

## Table 3 Species Categorisation Table

Common name	Latin name	Stock	Management	Category	IUCN Red List Category <sup>1</sup>	CITES Appendix 1 <sup>2</sup>
Herring	<i>Clupea harengus</i>	ICES Subdivisions 25-29 and 32	Yes	C	Least Concern <sup>3</sup>	No

<sup>1</sup> <https://www.iucnredlist.org/>

<sup>2</sup> <https://cites.org/eng/app/appendices.php>

<sup>3</sup> <https://www.iucnredlist.org/species/155123/45074983>

## CATEGORY C SPECIES

In a by-product assessment, Category C species are those which are subject to a species-specific management regime and are usually targeted species in fisheries for human consumption.

Clause C1 should be completed for each Category C species. If there are no Category C species in the fishery under assessment, this section can be deleted. Where a species fails this Clause, it should be assessed as a Category D species instead.

Species Name		Herring ( <i>Clupea harengus</i> )	
C1	Category C Stock Status - Minimum Requirements		
	C1.1	Fishery removals of the species in the fishery under assessment are included in the stock assessment process, OR are considered by scientific authorities to be negligible.	PASS
	C1.2	The species is considered, in its most recent stock assessment, to have a biomass above the limit reference point (or proxy), OR removals by the fishery under assessment are considered by scientific authorities to be negligible.	PASS
			Clause outcome: PASS

**C1.1 Fishery removals of the species in the fishery under assessment are included in the stock assessment process, OR are considered by scientific authorities to be negligible.**

Regular stock assessments for this stock are conducted by the ICES Baltic Fisheries Assessment Working Group (WGBFAS). The most recent assessment was conducted in 2024 using an age-based analytical assessment which used catches in the model and forecast. The assessment incorporated all commercial catches, one survey acoustic index, and natural mortalities from the multispecies model. Discarding is considered negligible.

The most recent ICES catch advice states “ICES advises that when the EU multiannual plan (MAP) for the Baltic Sea is applied, catches in 2025 that correspond to the F ranges in the plan are between 95 340 (corresponding to  $F_{MSY\ lower} \times SSB_{2025}/MSY_{B_{trigger}}$ ) and 125 344 tonnes (corresponding to  $F_{MSY} \times SSB_{2025}/MSY_{B_{trigger}}$ )” (ICES 2024).

Catches are presented in the figure below:

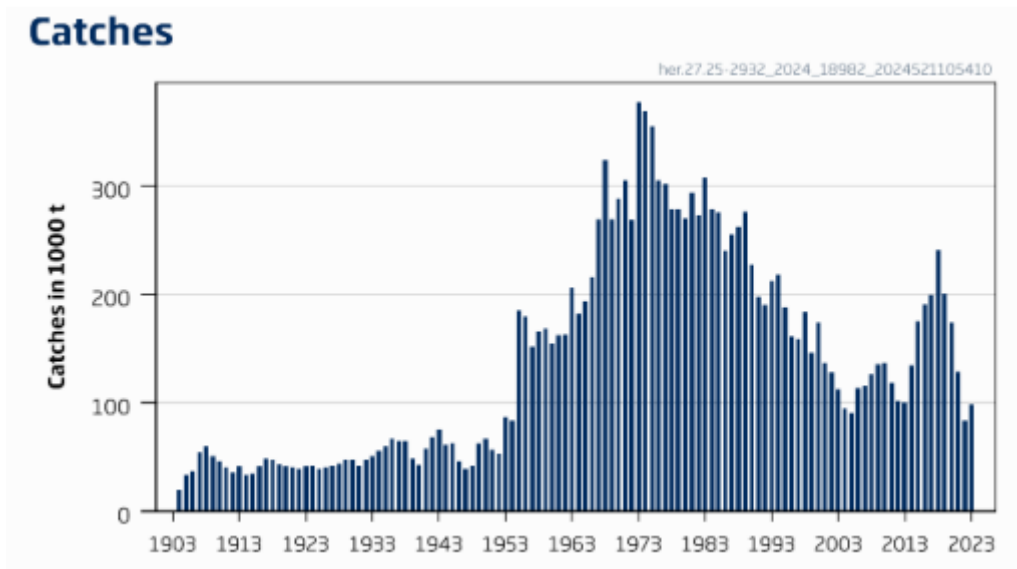


Figure 1. Herring in ICES Subdivisions 25-29 and 32: Catches (ICES 2024)

Therefore, fishery removals of the species in the fishery under assessment are included in the stock assessment process and therefore the stock PASSES clause C1.1.

**C1.2 The species is considered, in its most recent stock assessment, to have a biomass above the limit reference point (or proxy), OR removals by the fishery under assessment are considered by scientific authorities to be negligible.**

An indication of current stock status is provided in the annual ICES catch advice. Target reference points  $MSY B_{trigger}$  and  $B_{pa}$  are set at  $B_{30\%}$ , i.e. 30% of  $B_0$ . Limit reference point  $B_{lim}$  is set at  $0.15 \times B_0$ . The 2024 stock assessment produced a short-term projection for  $SSB_{2025} / MSY B_{trigger}$  of 0.73, above the limit reference point but below the target.

The 2024 catch advice states, “Fishing pressure on the stock is below  $F_{MSY}$ , and spawning-stock size is below  $MSY B_{trigger}$  and between  $B_{pa}$  and  $B_{lim}$ ” (ICES 2024).

Estimated SSB relative to current reference points is shown in Figure 2 below.

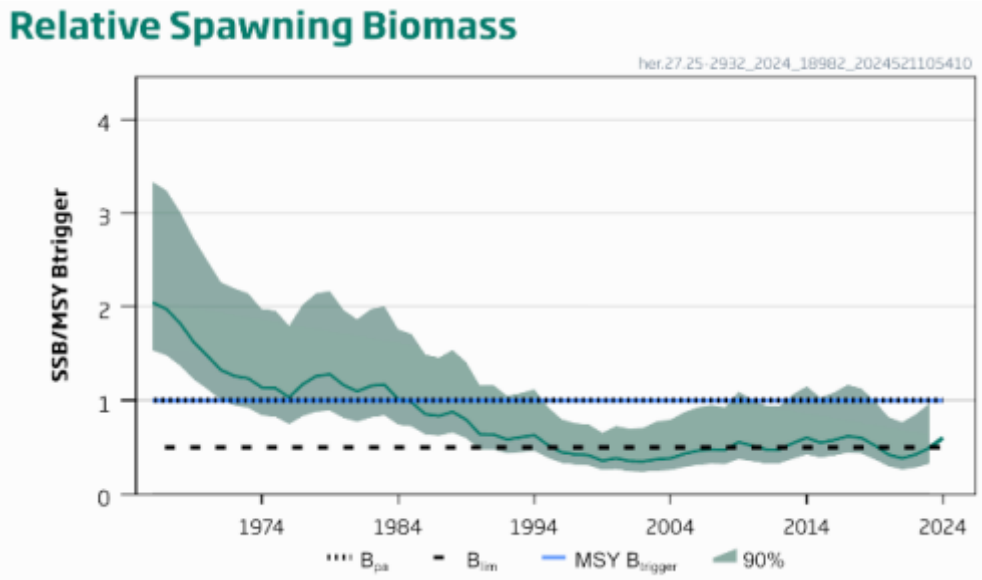


Figure 2. Herring in ICES Subdivisions 25-29 and 32:  $SSB/MSY B_{trigger}$  relative to current reference points (ICES 2024)

**Therefore, the species is considered, in its most recent stock assessment, to have a biomass above the limit reference point (or proxy) and it PASSES clause C1.2.**

**References**

ICES (2024). Herring (*Clupea harengus*) in subdivisions 25–29 and 32, excluding the Gulf of Riga (central Baltic Sea). ICES Advice: Recurrent Advice. Report. <https://doi.org/10.17895/ices.advice.25019276.v1>

**Links**

MarinTrust Standard clause	1.3.2.2
FAO CCRF	7.5.3
GSSI	D.3.04, D5.01