



MarinTrust Standard V2

By-product Fishery Assessment

LVA02

Cod (Gadus morhua)

in ICES Subarea 2 between

62°N and 67°N

MarinTrust Programme

Unit C, Printworks

22 Amelia Street

London

SE17 3BZ

E: standards@marin-trust.com

T: +44 2039 780 819

Table 1 Application details and summary of the assessment outcome

Fishery Under Assessment	Species:	Cod (<i>Gadus morhua</i>)
	Geographical area:	FAO 27
	Country of origin of the product:	Latvia
	Stock:	ICES Subarea 2 between 62°N and 67°N
Date	October 2024	
Report Code	LVA02	
Assessor	Sam Peacock	
Country of origin of the product - PASS	Latvia	
Country of origin of the product - FAIL	n/a	

Application details and summary of the assessment outcome			
Company Name(s): Association "Organization of Fishery Producers of Kurzeme"			
Country: Latvia			
Email address:		Applicant Code:	
Certification Body Details			
Name of Certification Body:		NSF / Global Trust Certification Ltd	
Assessor	Peer Reviewer	Assessment Days	Initial/Surveillance/Re-approval
Sam Peacock	Léa Lebechnech	0.2	Surveillance 1
Assessment Period	October 2024 – October 2025		

Scope Details	
Main Species	Cod (<i>Gadus morhua</i>)
Stock	ICES Subarea 2 between 62°N and 67°N
Fishery Location	FAO27
Management Authority (Country/ State)	EU
Gear Type(s)	Gillnets, bottom trawls, Danish seine, longline / handline
Outcome of Assessment	
Peer Review Evaluation	Agree with the assessor's determination
Recommendation	APPROVED

Table 2. Assessment Determination

Assessment Determination
<p>If any species is categorised as Endangered or Critically Endangered on IUCN’s Red List, or if it appears in the CITES appendices, it cannot be approved for use as Marin trust raw material. Cod (<i>Gadus morhua</i>) does not appear as Endangered or Critically Endangered on IUCN’s Red List, and does not appear in CITES appendices; therefore, <i>Gadus morhua</i> is eligible for approval for use as Marin trust by-product raw material.</p> <p>There is no management plan in place for this stock. The stock is managed using target and limit reference points and therefore was assessed under Category C.</p> <p>The most recent stock assessment was conducted in 2024 and utilised all international catch data, therefore C1.1 is met. The stock assessment concluded that SSB is below the target reference point level but above the limit reference point, therefore C1.2 is also met.</p> <p>Therefore, cod (<i>Gadus morhua</i>) in ICES Subarea 2 between 62°N and 67°N is APPROVED for the production of fishmeal and fish oil under the current MarinTrust v2.3 by-products.</p>
Fishery Assessment Peer Review Comments
<p>The assessor correctly classified cod (<i>Gadus morhua</i>) in ICES Subarea 2 between 62°N and 67°N under category C, as the stock is managed using target and limit reference points.</p> <p>Fishery removals of the species in the fishery under assessment are included in the stock assessment process and the species is considered, in its most recent stock assessment, to have a biomass above the limit reference point (or proxy). Therefore, the stock PASSES clauses C1.1 and C1.2.</p> <p>In conclusion, cod in ICES Subarea 2 between 62°N and 67°N, is APPROVED for the production of fishmeal and fish oil under the current MarinTrust V2.3 by-products standards.</p>
Notes for On-site Auditor

Species Categorisation

NB: If any species is categorised as Endangered or Critically Endangered on the IUCN Red List, or if it appears in CITES Appendix 1, it **cannot** be approved for use as an MarinTrust raw material.

IUCN Red list Category

By-product material from a species listed by IUCN (the International Union for Conservation of Nature) under the Red List for the following categories shall immediately fail the assessment;

- EXTINCT (E) AND EXTINCT IN THE WILD (EW)
- CRITICALLY ENDANGERED (CR) facing an extremely high risk of extinction in the wild.
- ENDANGERED (EN) facing a very high risk of extinction in the wild.

By-product material may be used from the following categories provided that all clauses in the MarinTrust standard are passed.

- VULNERABLE (VU) facing a high risk of extinction in the wild.
- NEAR THREATENED (NT) does not qualify for above now, but is close or is likely to qualify for, a threatened category in the near future.
- LEAST CONCERN (LC) Widespread and abundant.
- DATA DEFICIENT (DD) and NOT EVALUATED (NE)

Table 3 Species Categorisation Table

Common name	Latin name	Stock	Management	Category	IUCN Red List Category ¹	CITES Appendix 1 ²
Cod	<i>Gadus morhua</i>	ICES Subarea 2 between 62°N and 67°N	Yes	C	Least Concern ³	No

¹ <https://www.iucnredlist.org/>

² <https://cites.org/eng/app/appendices.php>

³ <https://www.iucnredlist.org/species/8784/45097319>

CATEGORY C SPECIES

In a by-product assessment, Category C species are those which are subject to a species-specific management regime and are usually targeted species in fisheries for human consumption.

Clause C1 should be completed for each Category C species. If there are no Category C species in the fishery under assessment, this section can be deleted. Where a species fails this Clause, it should be assessed as a Category D species instead.

Species Name		Cod (<i>Gadus morhua</i>)	
C1	Category C Stock Status - Minimum Requirements		
	C1.1	Fishery removals of the species in the fishery under assessment are included in the stock assessment process, OR are considered by scientific authorities to be negligible.	PASS
	C1.2	The species is considered, in its most recent stock assessment, to have a biomass above the limit reference point (or proxy), OR removals by the fishery under assessment are considered by scientific authorities to be negligible.	PASS
Clause outcome:			PASS

C1.1 Fishery removals of the species in the fishery under assessment are included in the stock assessment process, OR are considered by scientific authorities to be negligible.

Regular stock assessments for this stock are conducted by the ICES Arctic Fisheries Working Group (AFWG). The most recent assessment was conducted in 2024 using a Surplus Production Model in Continuous Time (SPiCT). The model incorporated commercial and recreational catches and three survey indices. Bycatch and recreational discarding was also included.

The most recent ICES catch advice states “ICES advises that when the MSY approach is applied, combined recreational and commercial catches in 2025 should be no more than 1 926 tonnes.” (ICES 2024).

Catches are presented in the figure below:

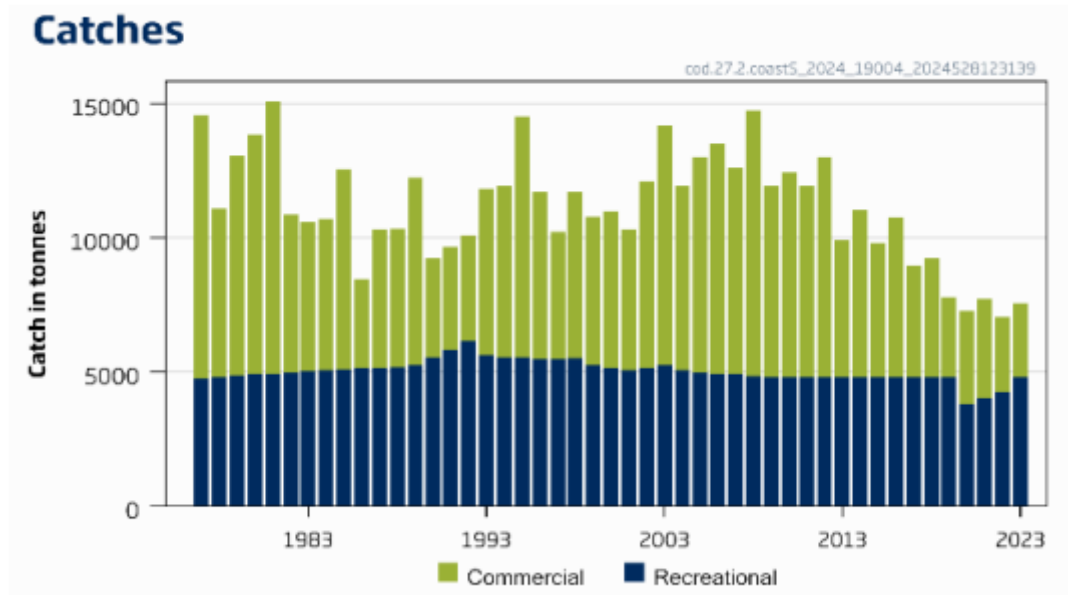


Figure 1. Cod in ICES Subarea 2 between 62°N and 67°N: Catches (ICES 2024)

Therefore, fishery removals of the species in the fishery under assessment are included in the stock assessment process and therefore the stock PASSES clause C1.1.

C1.2 The species is considered, in its most recent stock assessment, to have a biomass above the limit reference point (or proxy), OR removals by the fishery under assessment are considered by scientific authorities to be negligible.

An indication of current stock status is provided in the annual ICES catch advice. Reference points are not defined in absolute terms; rather B_{MSY} is estimated directly from the assessment model and changes when the assessment is updated. Target reference point $MSY B_{trigger}$ is set at $B/B_{MSY} = 0.5$. Limit reference point B_{lim} is set at $B/B_{MSY} = 0.3$. The 2024 stock assessment produced a short-term projection for B_{2025} / B_{MSY} of 0.41, above the limit reference point but below the target.

The 2024 catch advice states, “Fishing pressure on the stock is above F_{MSY} and below F_{lim} . Biomass is below $MSY B_{trigger}$ and above B_{lim} ” (ICES 2024).

Estimated SSB relative to current reference points is shown in Figure 2 below.

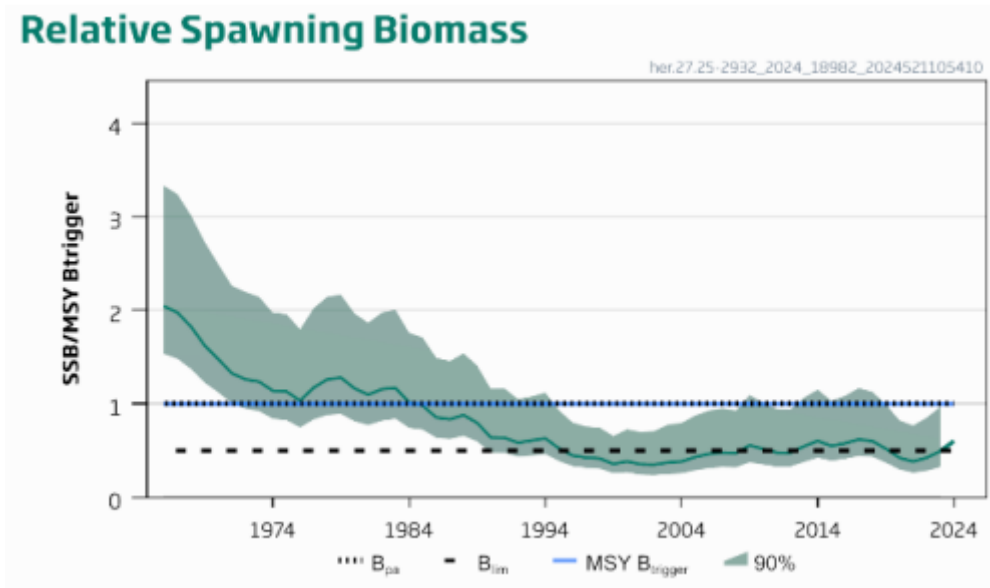


Figure 2. Cod in ICES Subarea 2 between 62°N and 67°N: B/B_{MSY} relative to current reference points (ICES 2024)

Therefore, the species is considered, in its most recent stock assessment, to have a biomass above the limit reference point (or proxy) and it PASSES clause C1.2.

References

ICES (2024). Cod (*Gadus morhua*) in Subarea 2 between 62°N and 67°N (Norwegian Sea), southern Norwegian coastal cod. ICES Advice: Recurrent Advice. Report. <https://doi.org/10.17895/ices.advice.25019210.v1>

Links

MarinTrust Standard clause	1.3.2.2
FAO CCRF	7.5.3
GSSI	D.3.04, D5.01