



MarinTrust Standard V2

By-product Fishery Assessment

NOR09

Saithe (*Pollachius virens*)

in ICES Subareas 1 and 2

MarinTrust Programme

Unit C, Printworks

22 Amelia Street

London

SE17 3BZ

E: standards@marin-trust.com

T: +44 2039 780 819

Table 1 Application details and summary of the assessment outcome

| | | |
|---|-----------------------------------|-------------------------------------|
| Fishery Under Assessment | Species: | Saithe (<i>Pollachius virens</i>) |
| | Geographical area: | FAO 27 northeast Atlantic Ocean |
| | Country of origin of the product: | Norway |
| | Stock: | Saithe in ICES Subareas 1 & 2 |
| Date | May 2024 | |
| Report Code | NOR09 | |
| Assessor | Sam Peacock | |
| Country of origin of the product - PASS | Norway | |
| Country of origin of the product - FAIL | n/a | |

| Application details and summary of the assessment outcome | | | |
|---|---------------------|---------------------------------------|----------------------------------|
| Company Name(s): TripleNine Vedde AS, Pelagia Måløy Sildoljefabrikk, Pelagia Karmsund Protein AS, Scanbio Ingredients AS, Lofoten Biomarine AS, Prima Protein AS, Pelagia Egersund Sildoljefabrikk, Pelagia Karmsund Fiskemel, Pelagia Bodø Sildoljefabrikk | | | |
| Country: Norway | | | |
| Email address: | | Applicant Code: | |
| Certification Body Details | | | |
| Name of Certification Body: | | NSF / Global Trust Certification Ltd. | |
| Assessor | Peer Reviewer | Assessment Days | Initial/Surveillance/Re-approval |
| Sam Peacock | Matthew Jew | 0.2 | Surveillance 2 |
| Assessment Period | May 2024 – May 2025 | | |

| Scope Details | |
|---------------------------------------|--|
| Main Species | Saithe (<i>Pollachius virens</i>) |
| Stock | Saithe in ICES Subareas 1 & 2 |
| Fishery Location | FAO 27 northeast Atlantic Ocean |
| Management Authority (Country/ State) | EU, Faroe Islands, Iceland, Norway, Russia, UK |
| Gear Type(s) | Bottom trawls, gillnets, purse seine, others |
| Outcome of Assessment | |
| Peer Review Evaluation | Agree with assessor's recommendation |
| Recommendation | APPROVED |

Table 2. Assessment Determination

| Assessment Determination |
|---|
| <p>If any species is categorised as Endangered or Critically Endangered on IUCN’s Red List, or if it appears in the CITES appendices, it cannot be approved for use as Marin trust raw material. Saithe (<i>Pollachius virens</i>) does not appear as Endangered or Critically Endangered on IUCN’s Red List, and does not appear in CITES appendices; therefore, <i>Pollachius virens</i> is eligible for approval for use as Marin trust by-product raw material.</p> <p>Saithe in ICES Subareas 1 & 2 is managed under a management plan implemented by Norway. The stock is managed relative to reference points, and was assessed under Category C.</p> <p>Saithe is subject to annual stock assessment by ICES. The most recent stock assessment incorporated catch, survey data and bycatch, and considered discarding to be negligible. C1.1 is met. Stock biomass was estimated to be higher than the limit reference point level, and C1.2 is met.</p> <p>Therefore, Saithe (<i>Pollachius virens</i>) in ICES Subareas 1 & 2 is APPROVED for the production of fishmeal and fish oil under the current MarinTrust v2.3 by-products.</p> |
| Fishery Assessment Peer Review Comments |
| <p>The assessor correctly classified saithe (<i>Pollachius virens</i>) in ICES Subareas 1 & 2 as Category C, the stock is subject to a specific management regime.</p> <p>Fishery removals are considered in the stock assessment process. The most recent stock assessment shows that the stock is above MSY $B_{trigger}$, B_{pa}, and B_{lim}. Therefore, the stock is considered to have biomass above the limit reference point (or proxy). It passes Category C.</p> <p>Saithe (<i>Pollachius virens</i>) in ICES Subareas 1 & 2 passes both clauses (C1.1 and C1.2) and therefore should be approved under the MarinTrust Standard v.2.3</p> |
| Notes for On-site Auditor |
| N/A |

Species Categorisation

NB: If any species is categorised as Endangered or Critically Endangered on the IUCN Red List, or if it appears in CITES Appendix 1, it **cannot** be approved for use as an MarinTrust raw material.

IUCN Red list Category

By-product material from a species listed by IUCN (the International Union for Conservation of Nature) under the Red List for the following categories shall immediately fail the assessment;

- EXTINCT (E) AND EXTINCT IN THE WILD (EW)
- CRITICALLY ENDANGERED (CR) facing an extremely high risk of extinction in the wild.
- ENDANGERED (EN) facing a very high risk of extinction in the wild.

By-product material may be used from the following categories provided that all clauses in the MarinTrust standard are passed.

- VULNERABLE (VU) facing a high risk of extinction in the wild.
- NEAR THREATENED (NT) does not qualify for above now, but is close or is likely to qualify for, a threatened category in the near future.
- LEAST CONCERN (LC) Widespread and abundant.
- DATA DEFICIENT (DD) and NOT EVALUATED (NE)

Table 3 Species Categorisation Table

| Common name | Latin name | Stock | Management | Category | IUCN Red List Category ¹ | CITES Appendix 1 ² |
|-------------|--------------------------|-------------------------------|------------|----------|-------------------------------------|-------------------------------|
| Saithe | <i>Pollachius virens</i> | Saithe in ICES Subareas 1 & 2 | Yes | C | Least Concern ³ | No |

¹ <https://www.iucnredlist.org/>

² <https://cites.org/eng/app/appendices.php>

³ <https://www.iucnredlist.org/species/190304/45098360>

CATEGORY C SPECIES

In a by-product assessment, Category C species are those which are subject to a species-specific management regime and are usually targeted species in fisheries for human consumption.

Clause C1 should be completed for each Category C species. If there are no Category C species in the fishery under assessment, this section can be deleted. Where a species fails this Clause, it should be assessed as a Category D species instead.

| Species Name | | Saithe (<i>Pollachius virens</i>) | |
|--------------|--|--|----------------------|
| C1 | Category C Stock Status - Minimum Requirements | | |
| | C1.1 | Fishery removals of the species in the fishery under assessment are included in the stock assessment process, OR are considered by scientific authorities to be negligible. | PASS |
| | C1.2 | The species is considered, in its most recent stock assessment, to have a biomass above the limit reference point (or proxy), OR removals by the fishery under assessment are considered by scientific authorities to be negligible. | PASS |
| | | | Clause outcome: PASS |

C1.1 Fishery removals of the species in the fishery under assessment are included in the stock assessment process, OR are considered by scientific authorities to be negligible.

Norwegian spring-spawning herring are subjected to annual stock assessment by the ICES Arctic Fisheries Working Group (AFWG). The most recent assessment was conducted in 2023 using an age-based analytical model which incorporates landings into the model and forecast. The assessment included commercial catches, one survey index, and average maturity estimates from surveys. Bycatch was included and discarding was considered negligible.

The 2023 catch advice states that “ICES advises that when the Norwegian management plan is applied, catches in 2024 should be no more than 223,123 tonnes” (ICES 2023).

Catches are presented in the figure below:

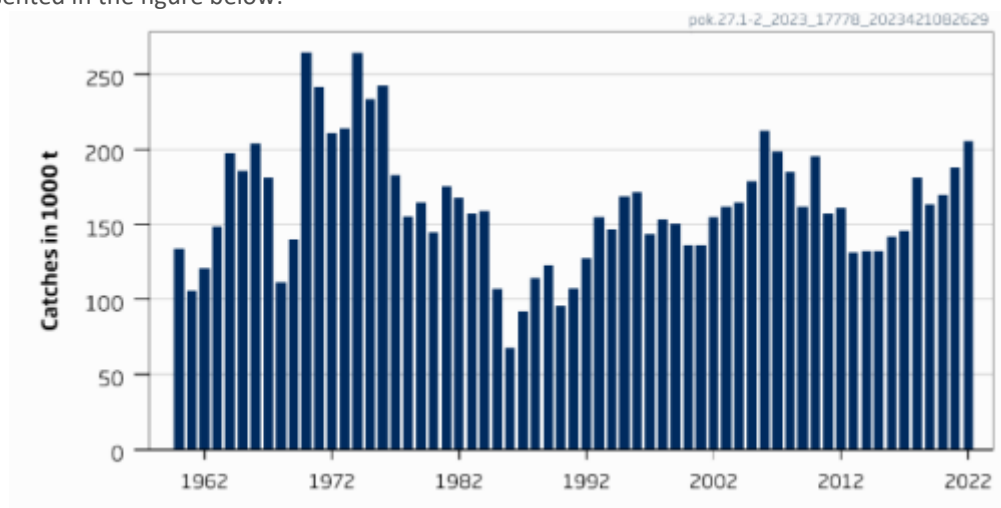


Figure 1. Saithe in ICES Subareas 1 & 2, catches (ICES 2023)

Therefore, fishery removals of the species in the fishery under assessment are included in the stock assessment process and therefore the stock PASSES clause C1.1.

C1.2 The species is considered, in its most recent stock assessment, to have a biomass above the limit reference point (or proxy), OR removals by the fishery under assessment are considered by scientific authorities to be negligible.

The regular ICES catch advice provides an indication of the status of the stock relative to established reference points. The target reference points B_{pa} , and SSB_{mgt} have been set at 220,000t. The limit reference point B_{lim} has been set at 136,000t. The 2023 catch advice included a short-term projection for SSB, estimating that it would be 638,756t in 2024.

The 2023 ICES catch advice states that “Fishing pressure on the stock is below F_{MP} , and spawning-stock size is above $MSY B_{trigger}$, B_{pa} , and B_{lim} ” (ICES 2023). See figure 2, below.

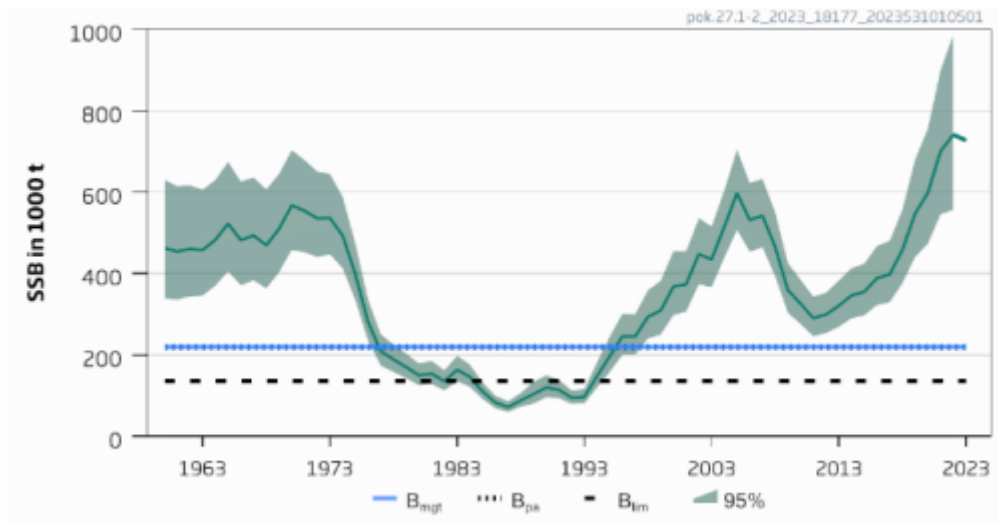


Figure 2. Saithe in ICES Subareas 1 & 2, estimated SSB relative to current reference points (ICES 2023).

Therefore, the species is considered, in its most recent stock assessment, to have a biomass above the limit reference point (or proxy) and it PASSES clause C1.2.

References

ICES (2023). Saithe (*Pollachius virens*) in subareas 1 and 2 (Northeast Arctic). ICES Advice: Recurrent Advice. Report. <https://doi.org/10.17895/ices.advice.21828384.v1>

Links

| | |
|----------------------------|---------------|
| MarinTrust Standard clause | 1.3.2.2 |
| FAO CCRF | 7.5.3 |
| GSSI | D.3.04, D5.01 |