



MarinTrust Standard V2

By-product Fishery Assessment NOR19

Herring (*Clupea harengus*) in ICES Subdivisions 25-29 and 32, excluding the Gulf of Riga

MarinTrust Programme

Unit C, Printworks

22 Amelia Street

London

SE17 3BZ

E: standards@marin-trust.com

T: +44 2039 780 819

Table 1 Application details and summary of the assessment outcome

Fishery Under Assessment	Species:	Herring (<i>Clupea harengus</i>)
	Geographical area:	FAO 27
	Country of origin of the product:	Denmark
	Stock:	ICES Subdivisions 25-29 and 32, excluding the Gulf of Riga
Date	June 2024	
Report Code	NOR19	
Assessor	Sam Peacock	
Country of origin of the product - PASS	Denmark	
Country of origin of the product - FAIL	n/a	

Application details and summary of the assessment outcome			
Company Name(s): Scanbio Ingredients AS			
Country: Norway			
Email address:		Applicant Code:	
Certification Body Details			
Name of Certification Body:		NSF / Global Trust Certification Ltd.	
Assessor	Peer Reviewer	Assessment Days	Initial/Surveillance/Re-approval
Sam Peacock	Léa Lebechnech	0.2	Surveillance 1
Assessment Period		June 2024 – June 2025	

Scope Details	
Main Species	Herring (<i>Clupea harengus</i>)
Stock	ICES Subdivisions 25-29 and 32, excluding the Gulf of Riga
Fishery Location	FAO 27
Management Authority (Country/ State)	EU, Russian Federation
Gear Type(s)	Pelagic trawls
Outcome of Assessment	
Peer Review Evaluation	Agree with the assessor's determination
Recommendation	APPROVED

Table 2. Assessment Determination

Assessment Determination
<p>If any species is categorised as Endangered or Critically Endangered on IUCN’s Red List, or if it appears in the CITES appendices, it cannot be approved for use as Marin trust raw material. Herring (<i>Clupea harengus</i>) does not appear as Endangered or Critically Endangered on IUCN’s Red List, and does not appear in CITES appendices; therefore, <i>Clupea harengus</i> is eligible for approval for use as Marin trust by-product raw material.</p> <p>This herring stock is managed by the EU via a Multiannual Plan (MAP) which is considered by ICES to be precautionary. The Russian Federation also participates in the fishery but does not have a management plan in place for the stock.</p> <p>The most recent stock assessment was conducted in 2024, using all international catch data and assuming negligible discards of herring, therefore C1.1 is met. The 2024 stock assessment concluded that stock biomass is above the limit reference point level, meaning that C1.2 is met.</p> <p>Therefore, herring (<i>Clupea harengus</i>) in ICES Subdivisions 25-29 and 32, excluding the Gulf of Riga is APPROVED for the production of fishmeal and fish oil under the current MarinTrust v2.3 by-products.</p>
Fishery Assessment Peer Review Comments
<p>The assessor correctly classified herring (<i>Clupea harengus</i>) in ICES Subdivisions 25-29 and 32, excluding the Gulf of Riga under category C, as the stock is managed and reference points are defined to assess the stock status against.</p> <p>Fishery removals from the stock are considered in the stock assessment process, and the most recent stock assessment shows that the stock is considered to have a biomass above limit reference point. Consequently, the fishery passes both clauses C1.1 and C1.2.</p> <p>Therefore, herring in Subdivisions 25-29 and 32, excluding the Gulf of Riga is APPROVED for the production of fishmeal and fish oil under the current MarinTrust V2.3 by-products standards.</p>
Notes for On-site Auditor

Species Categorisation

NB: If any species is categorised as Endangered or Critically Endangered on the IUCN Red List, or if it appears in CITES Appendix 1, it **cannot** be approved for use as an MarinTrust raw material.

IUCN Red list Category

By-product material from a species listed by IUCN (the International Union for Conservation of Nature) under the Red List for the following categories shall immediately fail the assessment;

- EXTINCT (E) AND EXTINCT IN THE WILD (EW)
- CRITICALLY ENDANGERED (CR) facing an extremely high risk of extinction in the wild.
- ENDANGERED (EN) facing a very high risk of extinction in the wild.

By-product material may be used from the following categories provided that all clauses in the MarinTrust standard are passed.

- VULNERABLE (VU) facing a high risk of extinction in the wild.
- NEAR THREATENED (NT) does not qualify for above now, but is close or is likely to qualify for, a threatened category in the near future.
- LEAST CONCERN (LC) Widespread and abundant.
- DATA DEFICIENT (DD) and NOT EVALUATED (NE)

Table 3 Species Categorisation Table

Common name	Latin name	Stock	Management	Category	IUCN Red List Category ¹	CITES Appendix 1 ²
Herring	<i>Clupea harengus</i>	ICES Subdivisions 25-29 and 32, excluding the Gulf of Riga	Yes	C	Least Concern ³	No

¹ <https://www.iucnredlist.org/>

² <https://cites.org/eng/app/appendices.php>

³ <https://www.iucnredlist.org/species/155123/4717767>

CATEGORY C SPECIES

In a by-product assessment, Category C species are those which are subject to a species-specific management regime and are usually targeted species in fisheries for human consumption.

Clause C1 should be completed for each Category C species. If there are no Category C species in the fishery under assessment, this section can be deleted. Where a species fails this Clause, it should be assessed as a Category D species instead.

Species Name		Herring (<i>Clupea harengus</i>)	
C1	Category C Stock Status - Minimum Requirements		
	C1.1	Fishery removals of the species in the fishery under assessment are included in the stock assessment process, OR are considered by scientific authorities to be negligible.	PASS
	C1.2	The species is considered, in its most recent stock assessment, to have a biomass above the limit reference point (or proxy), OR removals by the fishery under assessment are considered by scientific authorities to be negligible.	PASS
			Clause outcome: PASS

C1.1 Fishery removals of the species in the fishery under assessment are included in the stock assessment process, OR are considered by scientific authorities to be negligible.

Central Baltic herring is subject to annual stock assessment by the ICES Baltic Fisheries Assessment Working Group (WGBFAS). The most recent stock assessment was conducted in 2024 using an age-based analytical model which incorporated catches in the model and the forecast. The assessment also utilised age distributions from catch sampling, one acoustic survey index, and natural mortalities from multispecies modelling. Discarding is considered negligible.

The 2024 catch advice states, "ICES advises that when the EU multiannual plan (MAP) for the Baltic Sea is applied, catches in 2025 that correspond to the F ranges in the plan are between 95 340 (corresponding to $F_{MSY\ lower} \times SSB_{2025}/MSY_{B_{trigger}}$) and 125 344 tonnes (corresponding to $F_{MSY} \times SSB_{2025}/MSY_{B_{trigger}}$)" (ICES 2024)

Catches are presented in the figure below:

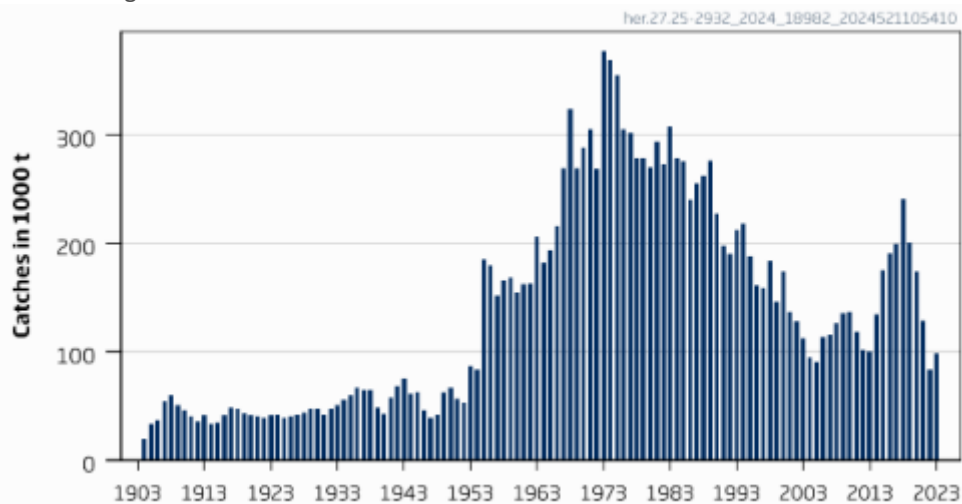


Figure 1. Central Baltic herring, catches in 1,000t (ICES 2024)

Therefore, fishery removals of the species in the fishery under assessment are included in the stock assessment process and therefore the stock PASSES clause C1.1.

C1.2 The species is considered, in its most recent stock assessment, to have a biomass above the limit reference point (or proxy), OR removals by the fishery under assessment are considered by scientific authorities to be negligible.

The 2024 catch advice provides an indication of current stock status relative to established reference points. The target reference points $MSY B_{trigger}$, B_{pa} , and $MAP MSY B_{trigger}$ have been set at $B_{30\%}$, representing 30% of B_0 . The limit reference points B_{lim} and $MAP B_{lim}$ have been set at $0.15 \times B_0$. The 2024 catch advice provides a short-term forecast for relative biomass, projecting $SSB_{2025} / MSY B_{trigger}$ to be 0.73.

The 2024 catch advice states that “Fishing pressure on the stock is below F_{MSY} , and spawning-stock size is below $MSY B_{trigger}$ and between B_{pa} and B_{lim} ” (ICES 2024). Relative biomass and current reference points are shown on Figure 2, below.

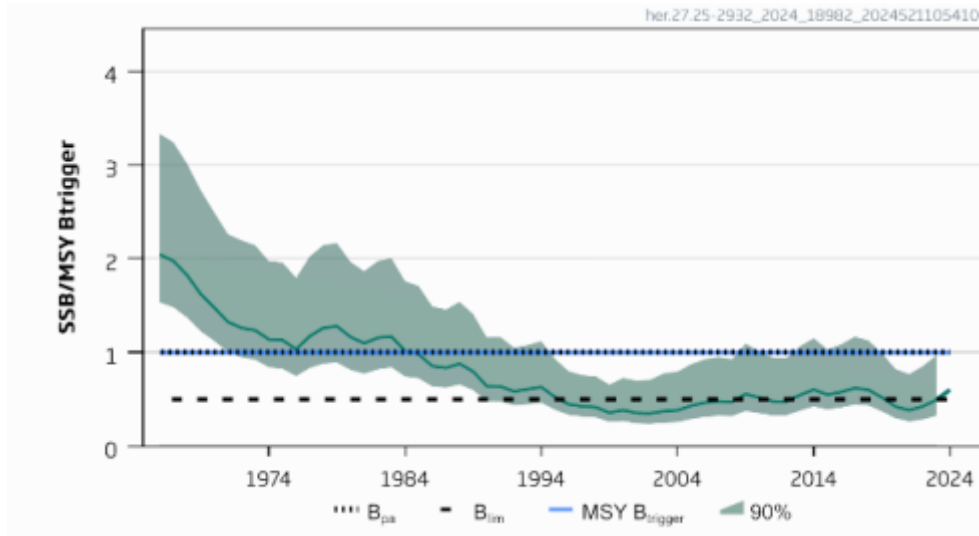


Figure 2. Central Baltic herring, relative SSB compared to current reference points (ICES 2024)

Therefore, the species is considered, in its most recent stock assessment, to have a biomass above the limit reference point (or proxy) and it PASSES clause C1.2.

References

ICES (2024). Herring (*Clupea harengus*) in subdivisions 25–29 and 32, excluding the Gulf of Riga (central Baltic Sea). ICES Advice: Recurrent Advice. Report. <https://doi.org/10.17895/ices.advice.25019276.v1>

Links

MarinTrust Standard clause	1.3.2.2
FAO CCRF	7.5.3
GSSI	D.3.04, D5.01