



MarinTrust Standard V2

By-product Fishery Assessment

THA24

Bigeye tuna (*Thunnus obesus*)

in FAO Areas 71 & 77

MarinTrust Programme

Unit C, Printworks

22 Amelia Street

London

SE17 3BZ

E: standards@marin-trust.com

T: +44 2039 780 819

Table 1 Application details and summary of the assessment outcome

Fishery Under Assessment	Species:	Bigeye tuna (<i>Thunnus obesus</i>)
	Geographical area:	FAO Areas 71 & 77
	Country of origin of the product:	Thailand
	Stock:	Western and Central Pacific Ocean bigeye tuna
Date	July 2024	
Report Code	THA24	
Assessor	Sam Peacock	
Country of origin of the product - PASS	Thailand	
Country of origin of the product - FAIL	None	

Application details and summary of the assessment outcome			
Company Name(s): TCF Co. Ltd, Chotiwat Manufacturing Public Co. Ltd, South East Asian Packaging and Canning Ltd, Piyo Bhokabhan Co. Ltd, TC Union Agrotech Co. Ltd, Thai Union Ingredients Co. Ltd			
Country: Thailand			
Email address:		Applicant Code:	
Certification Body Details			
Name of Certification Body:		NSF / Global Trust Certification Ltd.	
Assessor	Peer Reviewer	Assessment Days	Initial/Surveillance/Re-approval
Sam Peacock	Matthew Jew	0.2	Surveillance 1
Assessment Period	July 2024 – July 2025		

Scope Details	
Main Species	Bigeye tuna, <i>Thunnus obesus</i>
Stock	Western and Central Pacific Ocean bigeye tuna
Fishery Location	FAO Areas 71 & 77
Management Authority (Country/ State)	Western and Central Pacific Fisheries Commission (WCPFC)
Gear Type(s)	Purse seine (free and associated schools), longline, handline, gillnet, and pole-and-line.
Outcome of Assessment	
Peer Review Evaluation	Agree with assessor's recommendation
Recommendation	APPROVED

Table 2. Assessment Determination

Assessment Determination
<p>If any species is categorised as Endangered or Critically Endangered on IUCN’s Red List, or if it appears in the CITES appendices, it cannot be approved for use as Marin trust raw material. Bigeye tuna (<i>Thunnus obesus</i>) has been categorised by the IUCN as Vulnerable, and it does not appear in the CITES appendices. Therefore, <i>Thunnus obesus</i> is eligible for approval for use as Marin trust by-product raw material.</p> <p>Western and Central Pacific Ocean bigeye tuna is managed relative to target and limit reference points and is subject to annual quotas, and was therefore assessed under Category C.</p> <p>The stock was most recently assessed in 2023 using data up to 2021. The stock assessment outputs are considered reliable, and therefore C1.1 is met. The stock assessment concluded that stock biomass is likely to be above both the limit and target reference point levels. For this reason, C1.2 is met.</p> <p>Therefore, bigeye tuna (<i>Thunnus obesus</i>) in FAO Areas 71 and 77 is APPROVED for the production of fishmeal and fish oil under the current MarinTrust v2.3 by-products.</p>
Fishery Assessment Peer Review Comments
<p>The assessor correctly classified the bigeye tuna (<i>Thunnus obesus</i>) in FAO Areas 71 and 77 under category C, as the stock is managed and reference points are defined to assess the stock status against.</p> <p>Fishery removals from the stock are considered in the stock assessment process, and the most recent stock assessment shows that the stock is considered to have a biomass above the limit reference point: the fishery passes both clauses C1.1 and C1.2.</p> <p>Therefore, the bigeye tuna (<i>Thunnus obesus</i>) in FAO Areas 71 and 77 is APPROVED for the production of fishmeal and fish oil under the current MarinTrust V2.3 by-products standards.</p>
Notes for On-site Auditor
N/A

Species Categorisation

NB: If any species is categorised as Endangered or Critically Endangered on the IUCN Red List, or if it appears in CITES Appendix 1, it **cannot** be approved for use as an MarinTrust raw material.

IUCN Red list Category

By-product material from a species listed by IUCN (the International Union for Conservation of Nature) under the Red List for the following categories shall immediately fail the assessment;

- EXTINCT (E) AND EXTINCT IN THE WILD (EW)
- CRITICALLY ENDANGERED (CR) facing an extremely high risk of extinction in the wild.
- ENDANGERED (EN) facing a very high risk of extinction in the wild.

By-product material may be used from the following categories provided that all clauses in the MarinTrust standard are passed.

- VULNERABLE (VU) facing a high risk of extinction in the wild.
- NEAR THREATENED (NT) does not qualify for above now, but is close or is likely to qualify for, a threatened category in the near future.
- LEAST CONCERN (LC) Widespread and abundant.
- DATA DEFICIENT (DD) and NOT EVALUATED (NE)

Table 3 Species Categorisation Table

Common name	Latin name	Stock	Management	Category	IUCN Red List Category ¹	CITES Appendix 1 ²
Bigeye tuna	<i>Thunnus obesus</i>	Western and Central Pacific Ocean bigeye tuna	Yes	C	Vulnerable ³	No

¹ <https://www.iucnredlist.org/>

² <https://cites.org/eng/app/appendices.php>

³ <https://www.iucnredlist.org/species/21859/46912402>

CATEGORY C SPECIES

In a by-product assessment, Category C species are those which are subject to a species-specific management regime and are usually targeted species in fisheries for human consumption.

Clause C1 should be completed for each Category C species. If there are no Category C species in the fishery under assessment, this section can be deleted. Where a species fails this Clause, it should be assessed as a Category D species instead.

Species Name		Bigeye tuna (<i>Thunnus obesus</i>)	
C1	Category C Stock Status - Minimum Requirements		
	C1.1	Fishery removals of the species in the fishery under assessment are included in the stock assessment process, OR are considered by scientific authorities to be negligible.	PASS
	C1.2	The species is considered, in its most recent stock assessment, to have a biomass above the limit reference point (or proxy), OR removals by the fishery under assessment are considered by scientific authorities to be negligible.	PASS
Clause outcome:			PASS

C1.1 Fishery removals of the species in the fishery under assessment are included in the stock assessment process, OR are considered by scientific authorities to be negligible.

Bigeye tuna in the Western and Central Pacific Ocean is subject to regular stock assessment by the Western and Central Pacific Fisheries Commission. The most recent stock assessment was conducted in 2023, using data up to 2021. The assessment utilised all international catch data. 54 models were applied to take into account the main sources of uncertainty, and the results are presented alongside the likely confidence intervals (WCPFC 2021). All available catch data are incorporated into the assessment.

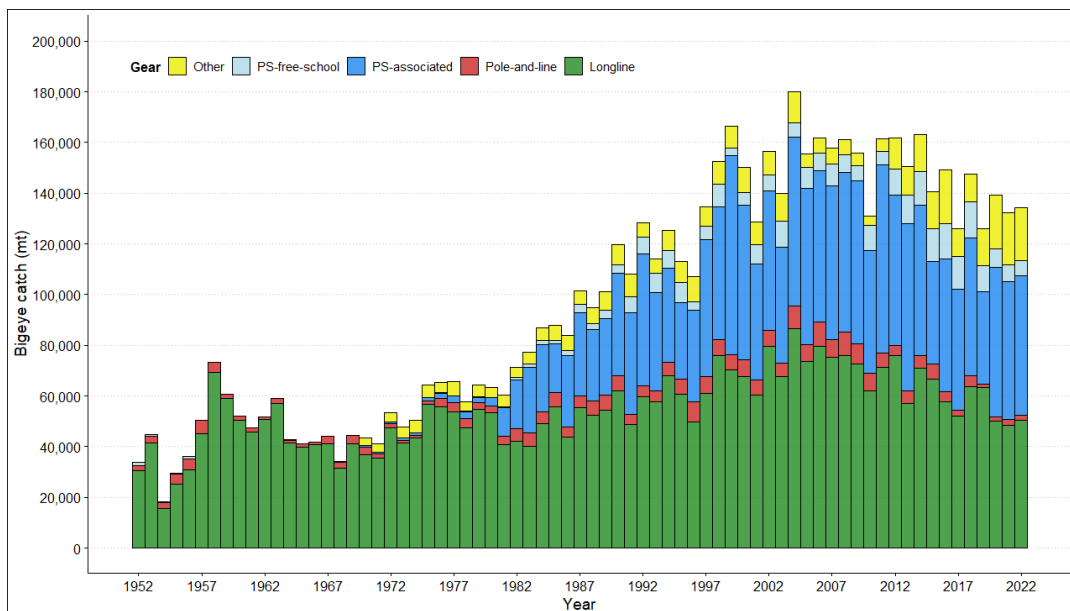


Figure 1. Time series of total annual catch ('000t) by fishing gear for the diagnostic model over the full assessment period.
Green = longline; red = pole and line; blue = purse seine (WCPFC 2024)

Therefore, fishery removals of the species in the fishery under assessment are included in the stock assessment process and therefore the stock PASSES clause C1.1.

C1.2 The species is considered, in its most recent stock assessment, to have a biomass above the limit reference point (or proxy), OR removals by the fishery under assessment are considered by scientific authorities to be negligible.

The results of the most recent stock assessment produced an estimate of the current status of the stock relative to target reference point SB_{MSY} . The assessment concluded across all 54 models that the mean value of SB_{latest}/SB_{MSY} was 1.76, with an 80% certainty that it was between 1.28 and 2.31 (WCPFC 2024). This translates to a very high probability that stock biomass is above the target reference point SB_{MSY} , and therefore also above any potential limit reference point. The most recent stock assessment summary also states that “For all models in the grid $SB_{recent}/SB_{F=0}$ was above the biomass limit reference point” (WCPFC 2024).

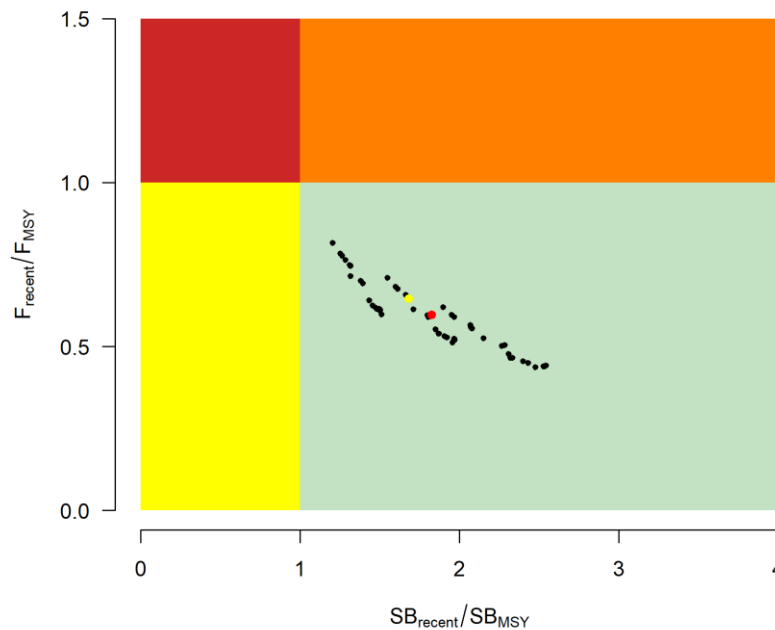


Figure 2. Western and Central Pacific bigeye tuna, Kobe plot for recent spawning potential (2018-2021) summarising the results for each of the models in the structural uncertainty grid. Median value is shown in red (WCPFC 2024)

Therefore, the species is considered, in its most recent stock assessment, to have a biomass above the limit reference point (or proxy) and it PASSES clause C1.2.

References

WCPFC (2024). WCPFC bigeye tuna stock status and management advice. <https://www.wcpfc.int/doc/01/bigeye-tuna>

Links

MarinTrust Standard clause	1.3.2.2
FAO CCRF	7.5.3
GSSI	D.3.04, D5.01