



MarinTrust Standard V2

By-product Fishery Assessment

USA09

Albacore tuna (*Thunnus alalunga*)

in FAO Areas 51 and 57

(Indian Ocean - Western and Eastern)

MarinTrust Programme

Unit C, Printworks

22 Amelia Street

London

SE17 3BZ

E: standards@marin-trust.com

T: +44 2039 780 819

Table 1 Application details and summary of the assessment outcome

Fishery Under Assessment	Species:	Albacore tuna (<i>Thunnus alalunga</i>)
	Geographical area:	FAO 51, 57 - Indian Ocean (Western and Eastern)
	Country of origin of the product:	Seychelles Flag countries: Seychelles, South Africa
	Stock:	Indian Ocean albacore tuna
Date	August 2024	
Report Code	USA09	
Assessor	Ana Elisa Almeida Ayres	
Country of origin of the product - PASS	USA Flag countries: Seychelles, South Africa	
Country of origin of the product - FAIL	NA	

Application details and summary of the assessment outcome			
Company Name(s): Indian Ocean Tuna Ltd			
Country: Seychelles Flag countries: Seychelles, South Africa			
Email address:		Applicant Code:	
Certification Body Details			
Name of Certification Body:		NSF / Global Trust Certification Ltd.	
Assessor	Peer Reviewer	Assessment Days	Initial/Surveillance/Re-approval
Ana Elisa Almeida Ayres	Léa Lebechnech	0.5	Surveillance 2
Assessment Period	August 2024 - 2025		

Scope Details	
Main Species	Albacore tuna (<i>Thunnus alalunga</i>)
Stock	Indian Ocean albacore tuna
Fishery Location	FAO 51 and 57 – Indian Ocean (Western and Eastern)
Management Authority (Country/ State)	Indian Ocean Tuna Commission (IOTC), Seychelles Fishing Authority, Department of Agriculture, Forestry and Fisheries (South Africa)
Gear Type(s)	Purse seine, baitboat, gillnet and pole-and-line
Outcome of Assessment	
Peer Review Evaluation	Agree with the assessor’s determination
Recommendation	APPROVED

Table 2. Assessment Determination

Assessment Determination
<p>If any species is categorised as Endangered or Critically Endangered on Union for Conservation of Nature's Red List of Threatened Species - IUCN's Red List, or if it appears in the Convention on International Trade in Endangered Species of Wild Fauna and Flora - CITES appendices, it cannot be approved for use as Marin Trust raw material. Albacore tuna - <i>Thunnus alalunga</i> is not categorised as Endangered or Critically Endangered on IUCN's Red List and does not appear in CITES appendices; therefore, albacore tuna - <i>Thunnus alalunga</i> is eligible for approval for use as Marin Trust by-product raw material.</p> <p>For assessment and management purposes, one discrete stock of albacore tuna is recognised in the Indian Ocean. The stock is subject to regular stock assessment by the Indian Ocean Tuna Commission (IOTC). The most recent was conducted in 2022, and fishery removals were considered, achieving a PASS against Clause C1.1. Biomass spawning is above the limit reference point and the assessment indicated that the stock is not overfished and is not subject to overfishing. Thus the stock PASS against C1.2.</p> <p>Albacore tuna (<i>Thunnus alalunga</i>) in Food and Agriculture Organization of the United Nations - FAO fishing areas 51 and 57 – Indian Ocean (Western and Eastern) is APPROVED for the production of fishmeal and fish oil under the current MarinTrust v2.3 by-products standard.</p>
Fishery Assessment Peer Review Comments
<p>The assessor correctly classified albacore tuna (<i>Thunnus alalunga</i>) in FAO area 51 and 57 – Indian Ocean (Western and Eastern) under category C, as the stock is managed and reference points are defined to assess the stock status against.</p> <p>As last year's report, fishery removals from the stock are considered in the stock assessment process, and the most recent stock assessment shows that the stock is considered to have a biomass well above the limit reference point. Consequently, the fishery passes both clauses C1.1 and C1.2.</p> <p>Therefore, albacore tuna in FAO areas 51 and 57 – Indian Ocean (Western and Eastern) is APPROVED for the production of fishmeal and fish oil under the current MarinTrust V2.3 by-products standards.</p>
Notes for On-site Auditor

Species Categorisation

NB: If any species is categorised as Endangered or Critically Endangered on the IUCN Red List, or if it appears in CITES Appendix 1, it **cannot** be approved for use as a MarinTrust raw material.

IUCN Red list Category

By-product material from a species listed by IUCN (the International Union for Conservation of Nature) under the Red List for the following categories shall immediately fail the assessment;

- EXTINCT (E) AND EXTINCT IN THE WILD (EW)
- CRITICALLY ENDANGERED (CR) facing an extremely high risk of extinction in the wild.
- ENDANGERED (EN) facing a very high risk of extinction in the wild.

By-product material may be used from the following categories provided that all clauses in the MarinTrust standard are passed.

- VULNERABLE (VU) facing a high risk of extinction in the wild.
- NEAR THREATENED (NT) does not qualify for above now, but is close or is likely to qualify for, a threatened category in the near future.
- LEAST CONCERN (LC) Widespread and abundant.
- DATA DEFICIENT (DD) and NOT EVALUATED (NE)

Table 3 Species Categorisation Table

Common name	Latin name	Stock	Management	Category	IUCN Red List Category ¹	CITES Appendix 1 ²
Albacore tuna	<i>Thunnus alalunga</i>	Indian Ocean albacore tuna	Yes	C	LC ³	No

¹ <https://www.iucnredlist.org/>

² <https://cites.org/eng/app/appendices.php>

³ <https://www.iucnredlist.org/species/21856/46911332>

CATEGORY C SPECIES

In a by-product assessment, Category C species are those which are subject to a species-specific management regime and are usually targeted species in fisheries for human consumption.

Clause C1 should be completed for each Category C species. If there are no Category C species in the fishery under assessment, this section can be deleted. Where a species fails this Clause, it should be assessed as a Category D species instead.

Species Name		Albacore tuna (<i>Thunnus alalunga</i>)	
C1	Category C Stock Status - Minimum Requirements		
	C1.1	Fishery removals of the species in the fishery under assessment are included in the stock assessment process, OR are considered by scientific authorities to be negligible.	Pass
	C1.2	The species is considered, in its most recent stock assessment, to have a biomass above the limit reference point (or proxy), OR removals by the fishery under assessment are considered by scientific authorities to be negligible.	Pass

Clause outcome: Pass

C1.1 Fishery removals of the species in the fishery under assessment are included in the stock assessment process, OR are considered by scientific authorities to be negligible.

Albacore in the Indian Ocean is subject to regular stock assessment by the Indian Ocean Tuna Commission (IOTC). The most recent was conducted in 2022 using Stock Synthesis III (SS3), and utilised international catch and CPUE data. There are several CPUE indices available – including those for the North-Western and South-Western fisheries, and several eastern indices – which indicate trends in separate components of the Indian Ocean albacore stock. The stock assessment summary concludes that the western indices “may best represent the abundance of albacore at this time”, and that “the eastern indices are affected by changes in targeting” (IOTC 2022).

According to IOTC (2023), the catch estimates for 2022 (46,625 t) were above the estimated maximum sustainable yield - MSY levels. Fishing mortality represented as F_{2020}/F_{MSY} is 0.68 (0.42–0.94). Fishing mortality was considered to be below the interim target reference point of F_{MSY} , and therefore, below the interim limit reference point of $1.4 * F_{MSY}$.

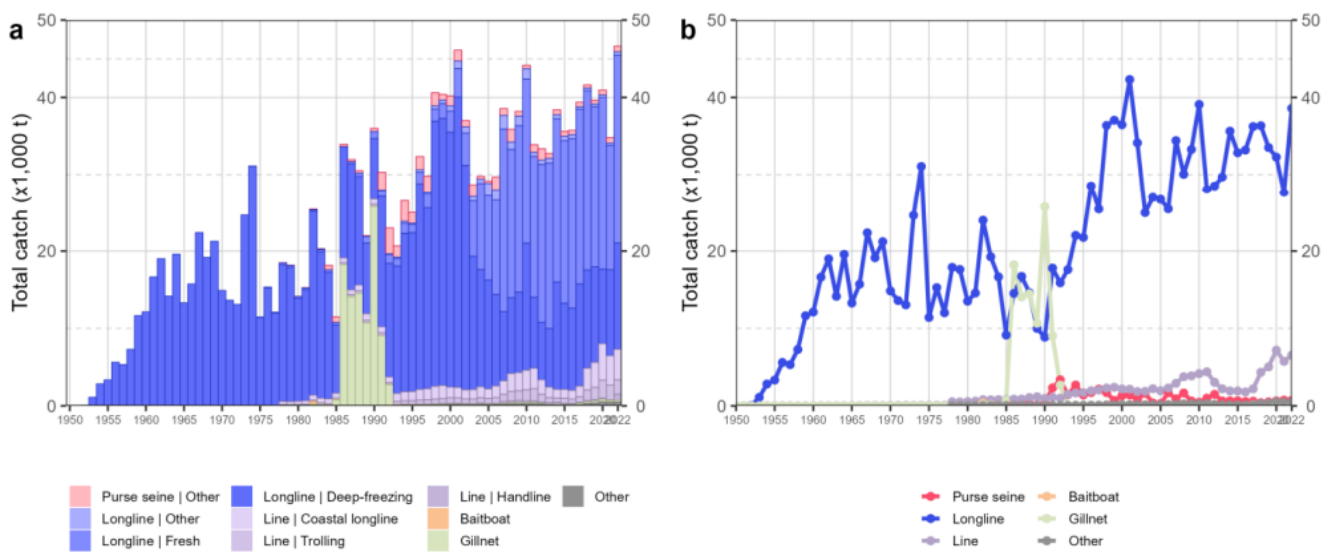


Figure 1. Annual time series of (a) cumulative nominal catches (metric tonnes; t) by fishery and (b) individual nominal catches (metric tonnes; t) by fishery group for albacore during 1950-2022. Purse seine | Other: coastal purse seine,

purse seine of unknown association type, ring net; Longline | Other: swordfish and sharks-targeted longlines; Other: all remaining fishing gears (IOTC, 2023).

Fishery removals of albacore tuna are incorporated into the stock assessment process and therefore C1.1 is met.

C1.2 The species is considered, in its most recent stock assessment, to have a biomass above the limit reference point (or proxy), OR removals by the fishery under assessment are considered by scientific authorities to be negligible.

The 2022 stock assessment concluded that in relation to the IOTC’s interim target reference points, the stock is “not overfished and is not subject to overfishing” (IOTC 2022 & 2023). The biomass target reference point is set at $0.4 \times SBMSY$ (i.e. 40% of the target reference point $SBMSY$), and therefore the stock assessment also concluded that “current spawning biomass is considered to be...above the limit reference point” (IOTC 2022). Catches in 2020 were marginally below the MSY level estimated by the $SS3$ model. Fishing mortality represented as $F_{2020}/FMSY$ is 0.68 (0.42–0.94). Biomass is estimated to be above the $SBMSY$ level (1.56 (0.892.24)) from the $SS3$ models.

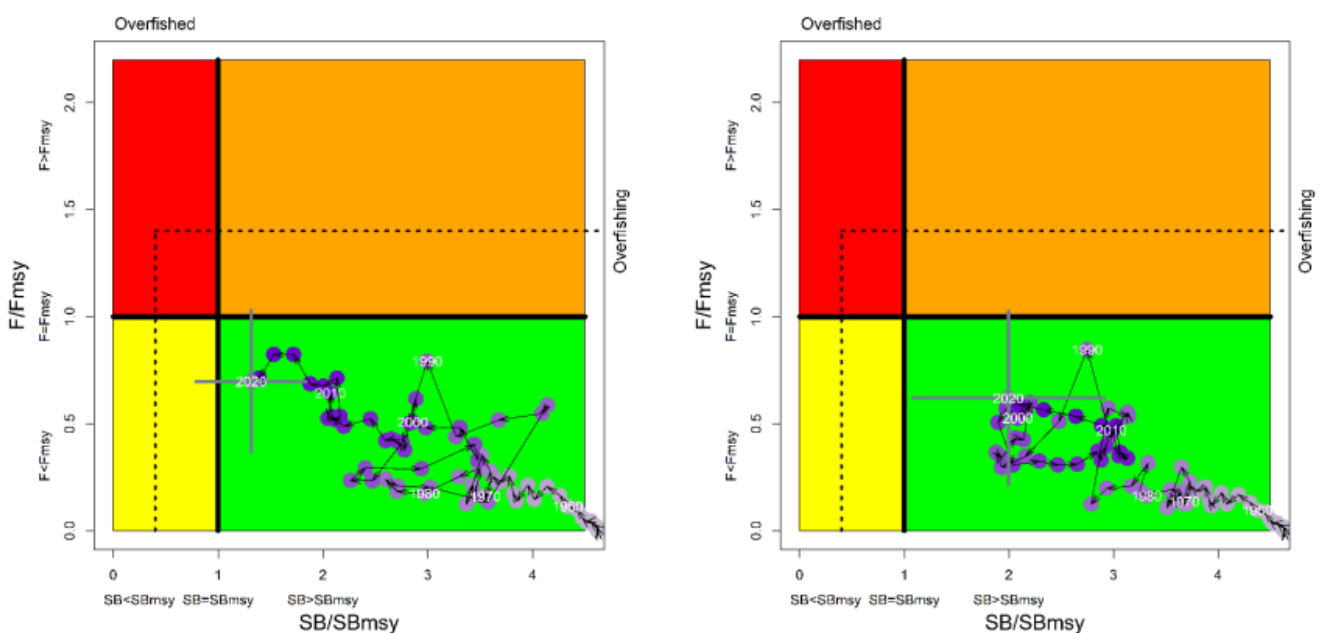


Figure 2. Albacore: $SS3$ Indian Ocean assessment Kobe plot for the two model options considered: (i) Model fitted to the North-western CPUE; (ii) Model fitted to the South-western CPUE. Purple circles indicate the trajectory of the point estimates for the spawning biomass (SB) ratio and fishing mortality (F) ratio for each year 1950–2020 (the grey lines represent the 95 percentiles of the 2020 estimate). Target (F_{target} and SB_{target}) and limit (F_{lim} and SB_{lim}) reference points are shown in dashed lines (IOTC, 2023).

The species is considered, in its most recent stock assessment, to have a biomass above the limit reference point (or proxy), **C1.2** is met.

References

IOTC (2022). Albacore tuna stock status and advice, executive summary, 2022. https://iotc.org/sites/default/files/content/Stock_status/2022/Albacore2022E.pdf

IOTC (2023). Albacore tuna stock status and advice, executive summary, 2023. https://iotc.org/sites/default/files/content/Stock_status/2023/Albacore_ES_2023.pdf

Links

MarinTrust Standard clause	1.3.2.2
FAO CCRF	7.5.3
GSSI	D.3.04, D5.01